

DECCA wiper

Heavy duty straightline version

Technical Specifications

MODEL: SO95115 (Single)

MODEL: TO95315 (Twin)



Content

CONTENT 1

1. SPECIFICATIONS 2

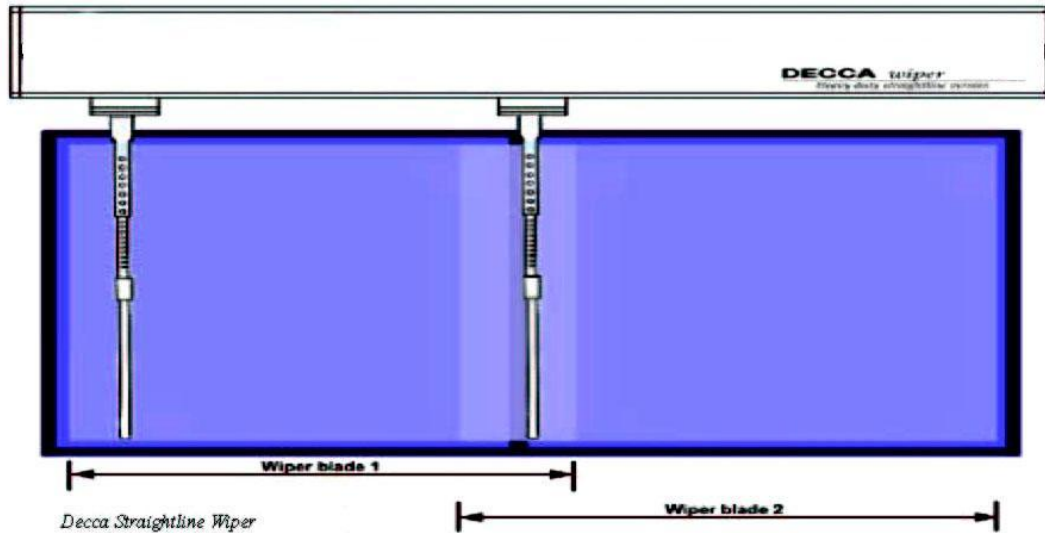
 FIG1 SINGLE WIPER 3

 FIG2 TWIN WIPER 3

 FIG 3 DESCRIPTIONS EACH PARTS 4

2. WARRANTY 5

1. Specifications



Specifications					
	Single			Twin	
Stroke	Min	300mm		Min	600mm
	Max	3000mm		Max	5000mm
Arm	Max	800mm		Max	800mm
Blade	Max	1000mm		Max	900mm
Wiper speed	Min	0,5m per second		Min	0,5m per second
	Max	1,0m pr second		Max	1,0m pr second
Motor	AC/DC with fast speed/slow/interval				
Heater	75W pr meter				
Mounting	Above and/or below the window				
Parking sensor	Standard optical				
Spray nozzles	1 up to 1000mm stroke, 2 for longer stroke length, with 12 mm diameter on piping.				
IP Class 66	Protected against heavy seas				

Table 1

Wiper house length, mm:	710	810	910	1010	1110	1210	1310	1410
Stroke length, mm:	500	600	700	800	900	1000	1100	1200

Wiper house length, mm:	1510	1610	1710	1810	1910	2010	2110	2210
Stroke length, mm:	1300	1400	1500	1600	1700	1800	1900	2000

Tailor-made at any length from 500mm to 5000mm

The wiper length and the stroke length can each be adapted for maximum clearing of the window. See table 1

Fig1 Single Wiper

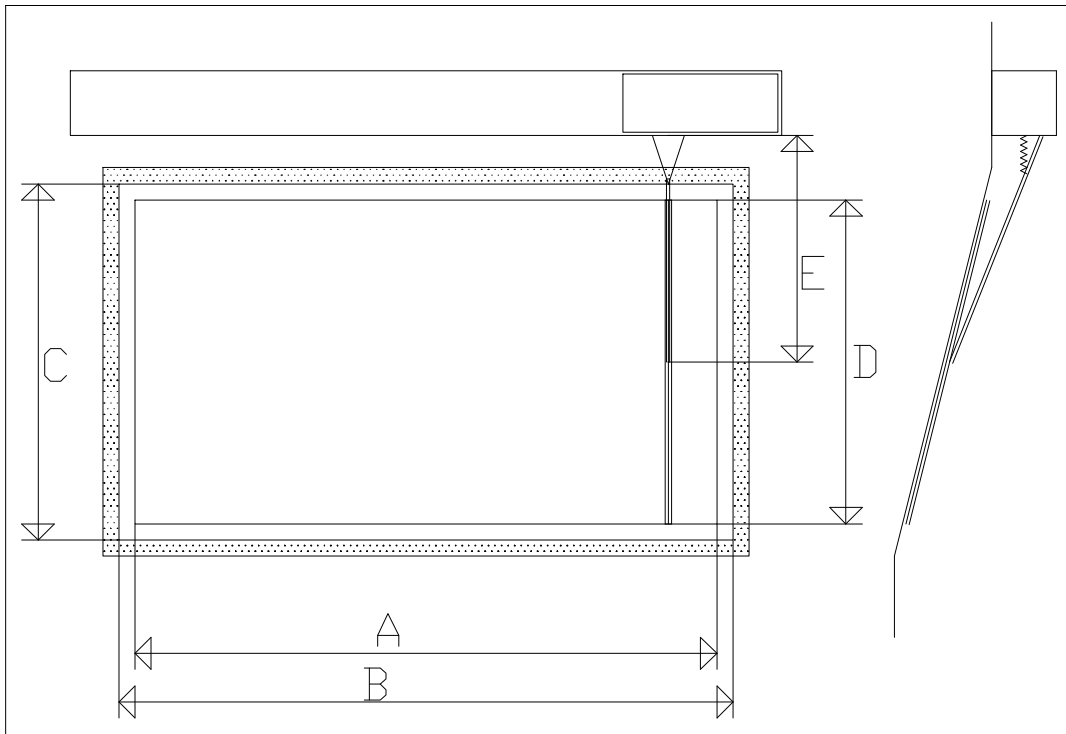


Fig2 Twin Wiper

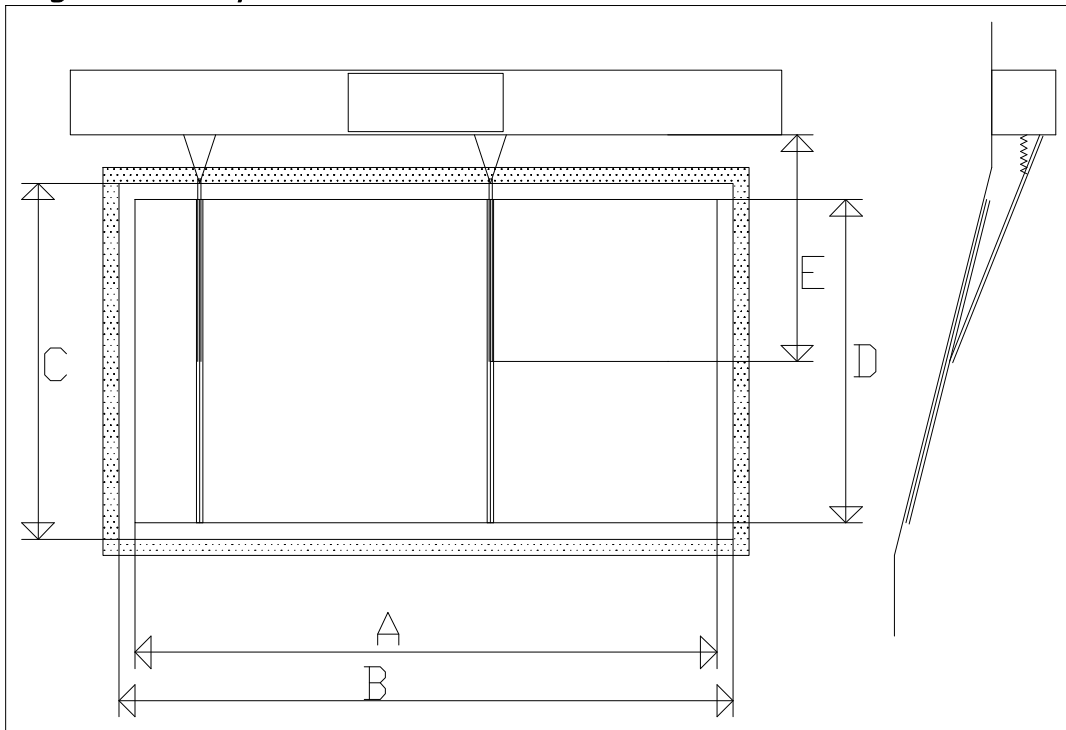
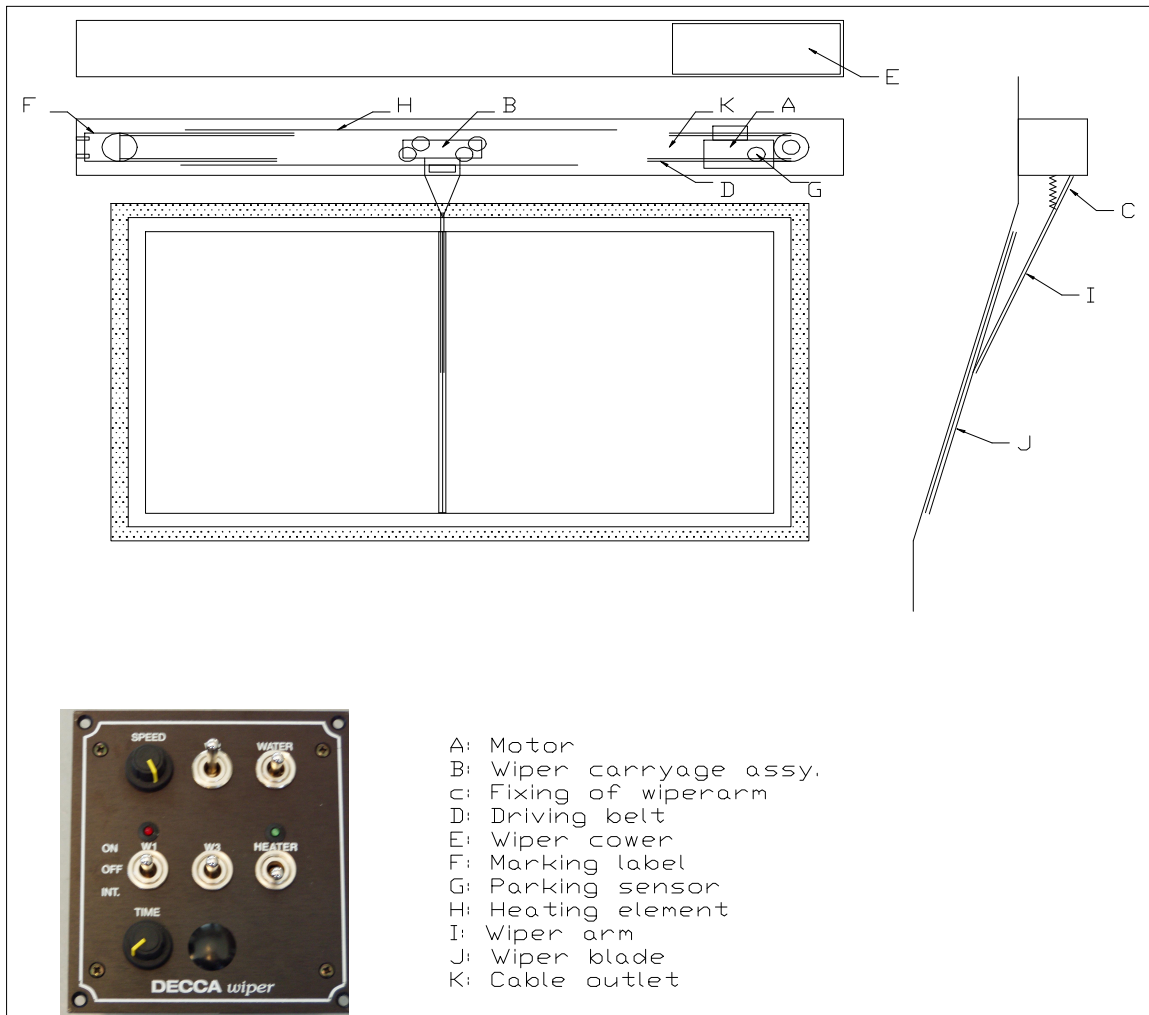


Fig 3 Descriptions each parts



All materials used in the manufacturing of the Decca wiper are the very best available:

- Self- adjusting polyamide track rollers
- Sealed stainless steel bearings (AISI 316).
- Housing in seawater resistant aluminium with powder coated surface for maximum weather resistance
- Unique carriage assembly does not weaken the drive belt

A. Engine

The standard motor is a Parvalux 220v DC.

B. Wiper carriage

Wiper carriage moved from side to side.

C. Wiper arm

Wiper arm detach with tree screws. Adjust and adapt to the height of window.

D. Drive belt

Before delivering the wiper are tested for five hours and the belt are adjust in correct length.

E. Wiper cover (9511570)

Wiper cover are detach to the wiper house with four stainless steal screws.

F. Marking label

Inside the engine cover and below wiper on the left side can you find the marking label. On each marking label you also find the serial number.

G. Parking Sensor

Decca wiper has automatic parking.

The wiper has an inductive sensor to start and stop the engine. No mechanical switch.

H. Heating element

There are heating elements above and below roller tracks. Heating effect is 75W per meter. The elements are attached to the main power cable.

I. Wiper arm

Wiper arm attached with tree screws. Adjust and adapt to the height of window.

J. Wiper blade

The length of the wiper blade is maximum 1000 mm.

K. Cable outlet.

When ordering spare parts, please refer to the unique serial number for the wiper.

2. Warranty

Our equipment is guaranteed for 2 years, with extended 5 years for 3-phase AC induction warranty on the motor. Wiper shall not be exposed for any additional surface treatment such as sandblasting or any other form of surface treatment, as this will affect the warranty.

Sales and Distribution:



Lønningsflaten 30, 5258 Blomsterdalen, Bergen NORWAY
TLF: +47 55 52 54 20 FAX: +47 55 52 54 21 e-mail: klaus@reimers.no