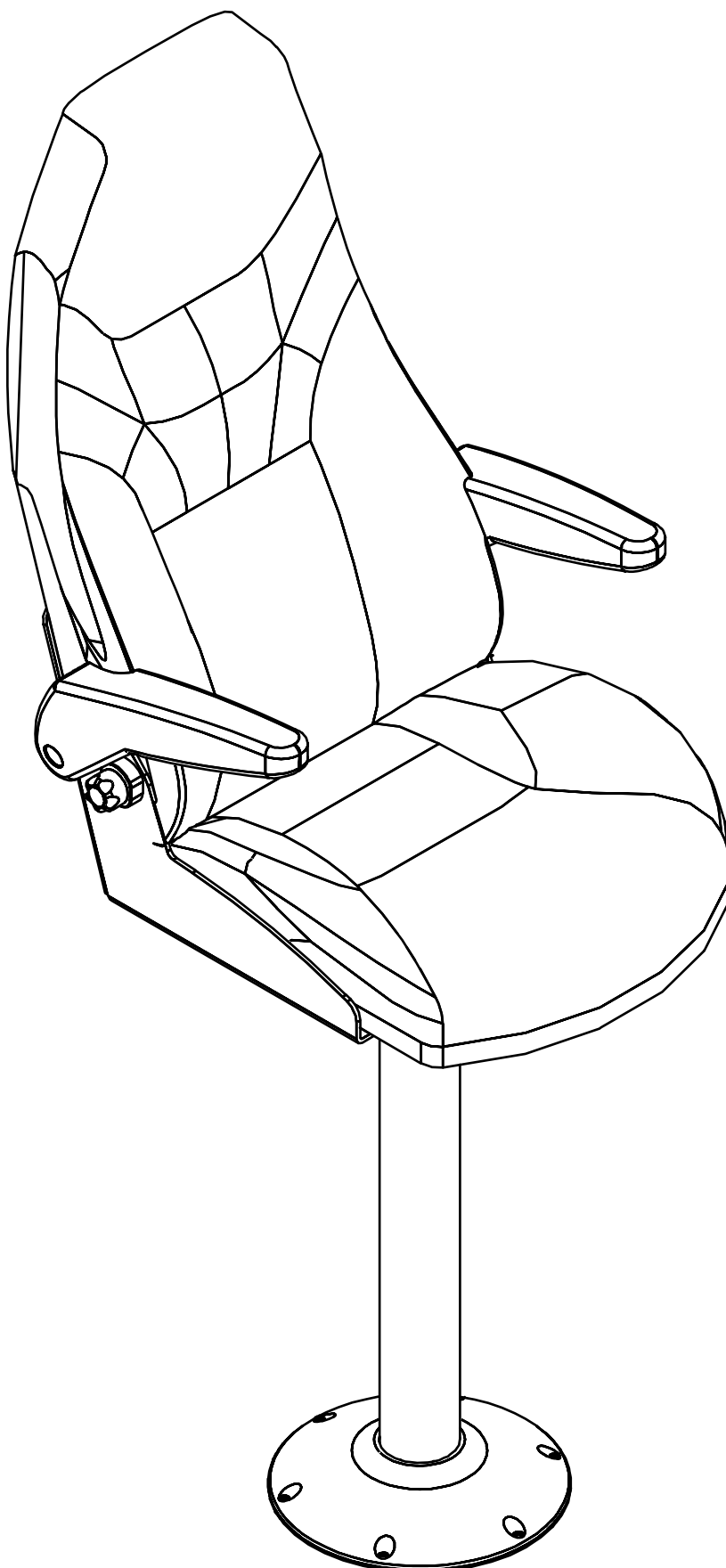
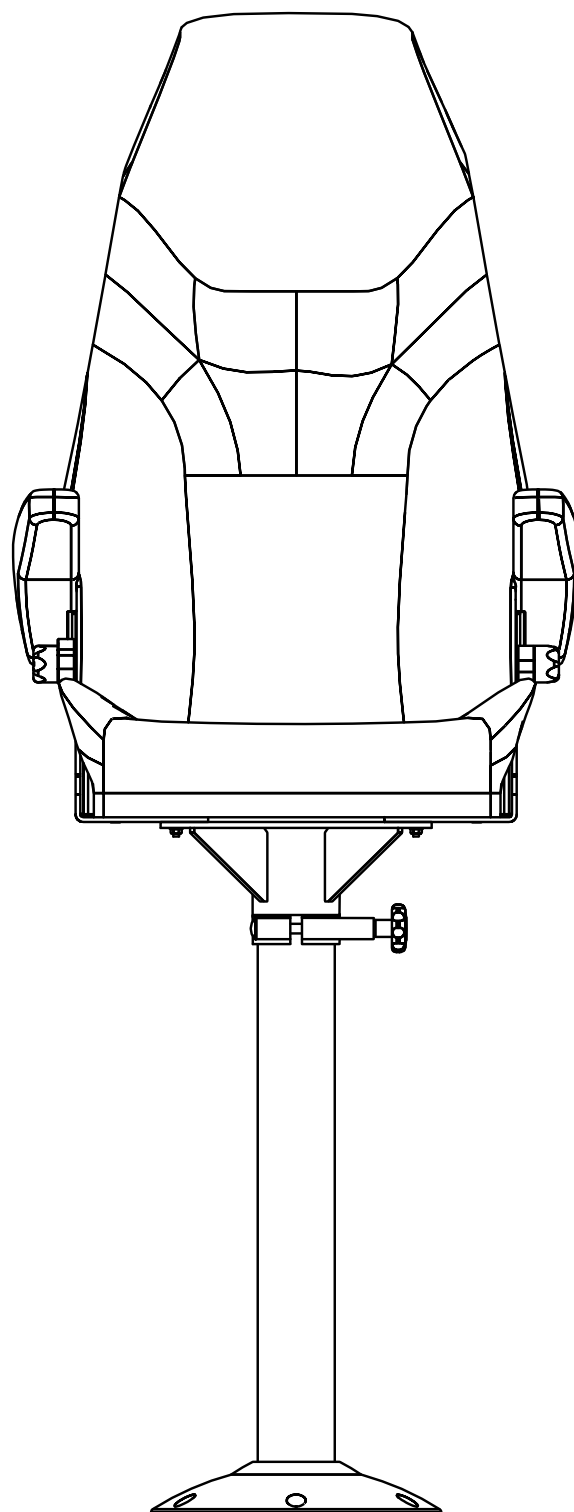
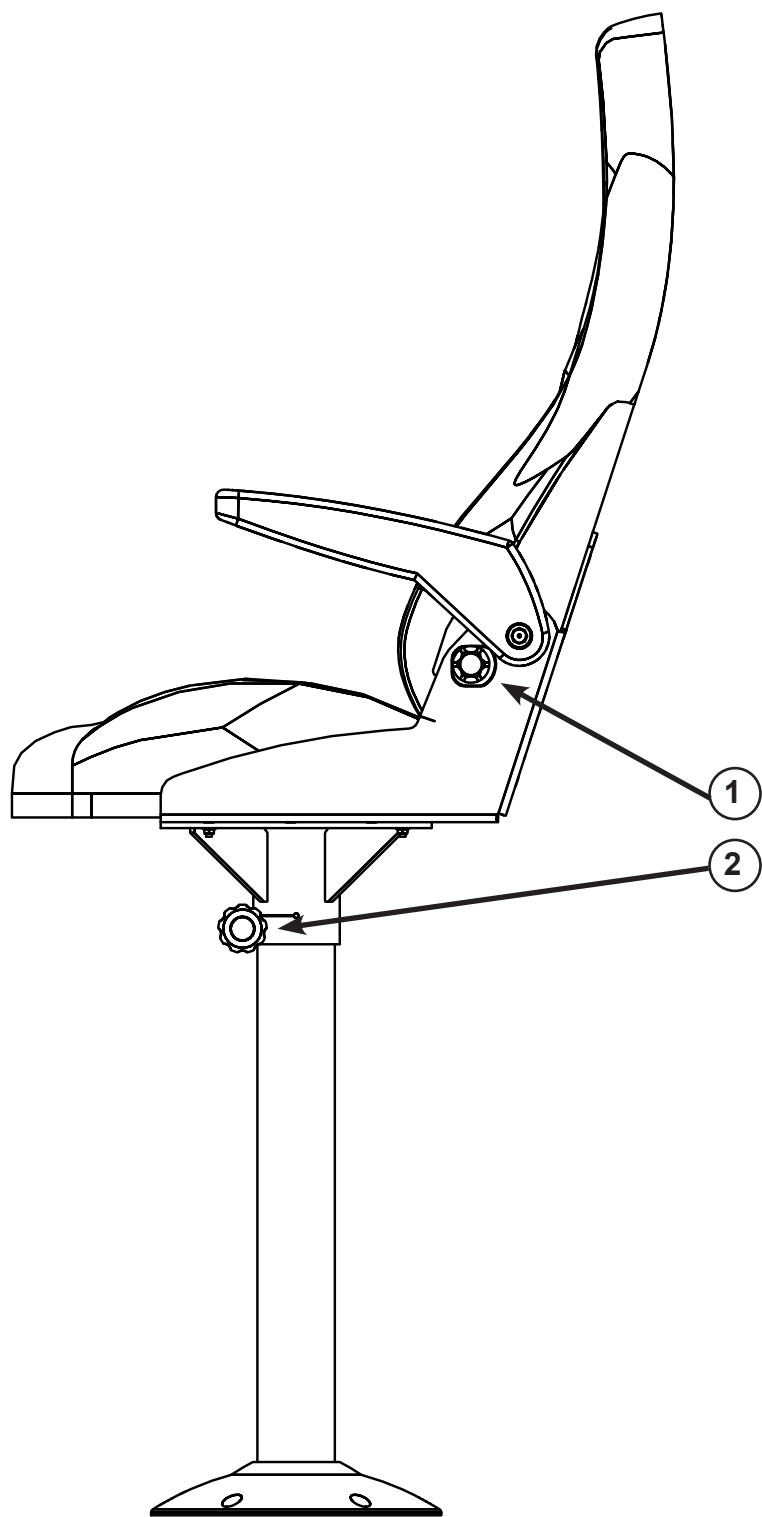


Users Manual

NorSap™ 800 Sailor (6110)

December 1, 2008 8:31 AM





- ① Adjustable arm rest
- ② Adjustable turn



Care and maintenance of leather

Most leather qualities have originally received one or another type of surface protection treatment. When the furniture is taken in use, grease from hand and neck will be in contact with the leather on a regular basis. Without proper cleaning the leather will over a period of time leave grease spots or discoloration's. To avoid this clean with Soft Cleaner on a regular basis, we advise once a month. Use Leather Protection Cream or a leather cream with impregnation 2-4 times a year. This will protect against spots, increase wear resistance and preserve the leathers softness. By following these instructions you will ensure a long and lasting leather quality.

- Avoid direct sunlight over a longer period of time.
- Do not place a heat source within a distance of 20-30 cm.
- Remove dust or vacuum, use Soft Cleaner once a month.

Contact us or an authorized leather producer or Furniture Dealer for more cleaning medium or for further cleaning details.

Our supplier of cleaning medium is:

Leather Master AS

6220 Straumgjerde

NORWAY

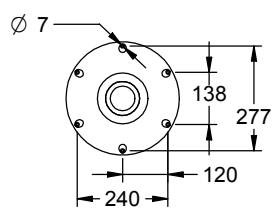
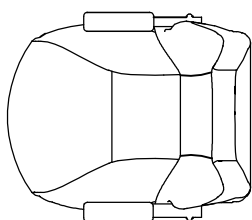
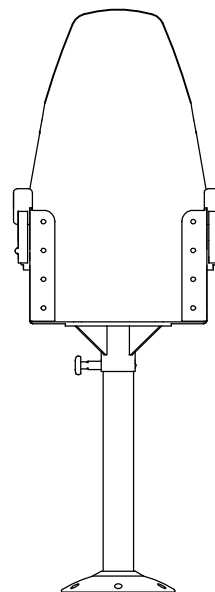
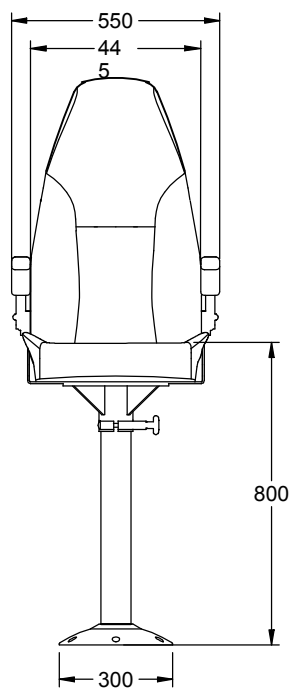
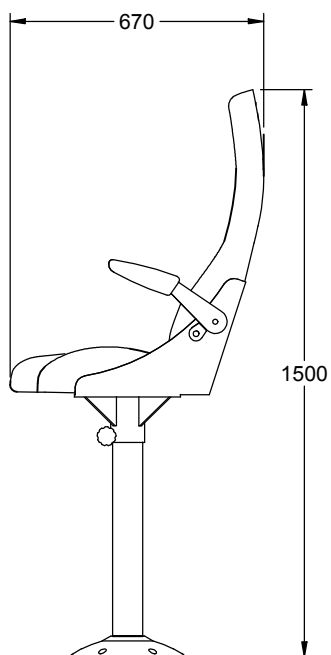
Tlf. +47 70 25 35 50

Fax. +47 70 25 35 58

Internet: leathermaster.no

E-mail: service@leathermaster.no

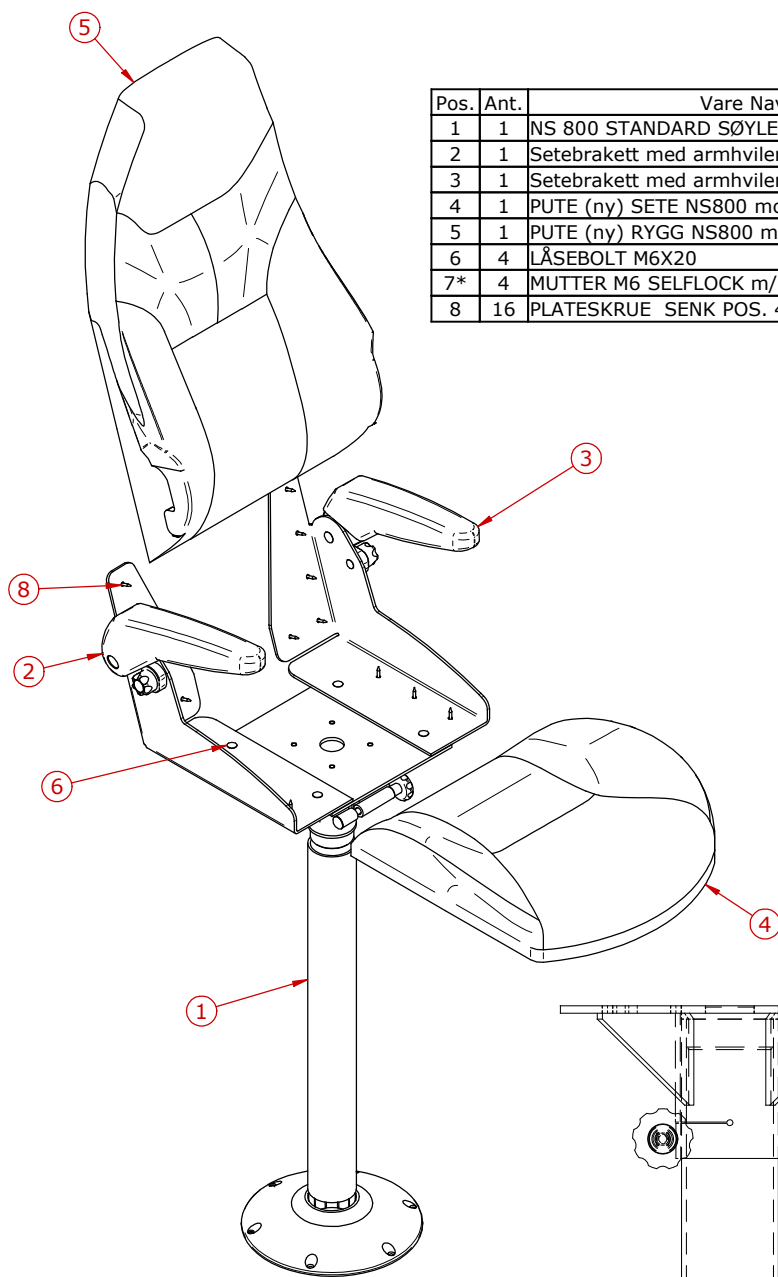




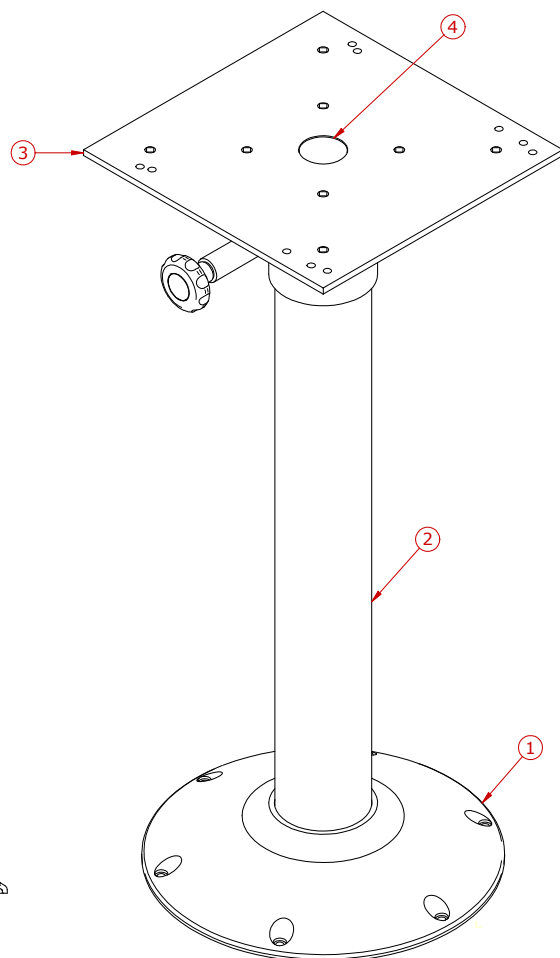
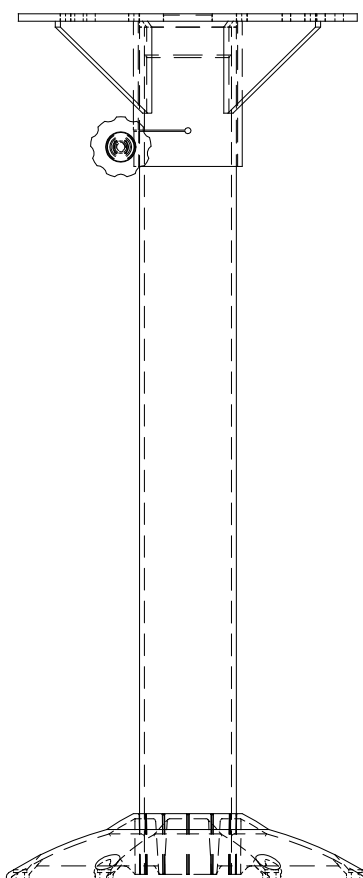
Art.No:6110



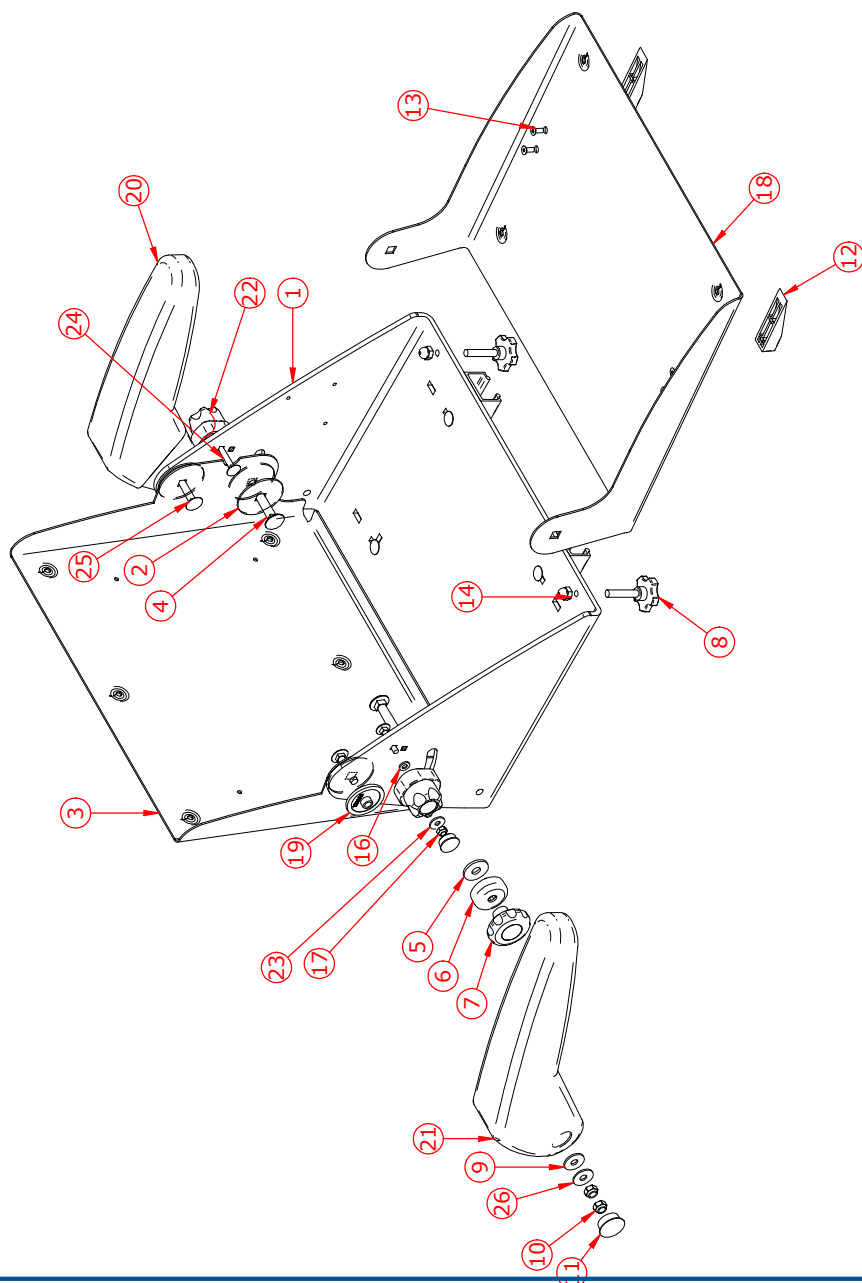
Fast sitteheide: 800
Fixed sitting height: 800



Pos.	Ant.	Vare Navn	Vare Nr.	Rev.
1	1	NS 800 STANDARD SØYLE U. GL.SKINNER	DEL-055UG	A-01
2	1	Setebrakett med armhviler høyre	Del-777H	A-03
3	1	Setebrakett med armhviler venstre	Del-777V	A-03
4	1	PUTE (ny) SETE NS800 mod.2002	PUTE-024	0-1
5	1	PUTE (ny) RYGG NS800 mod.2002	PUTE-025	0-1
6	4	LÅSEBOLT M6X20	B413-M6X20	
7*	4	MUTTER M6 SELFLOCK m/RILLER DIN 6923	B463-M6	
8	16	PLATESKRUE SENK POS. 4,2X25	B434-4,2x25	0-1



Pos.	Ant.	Vare Navn	Vare Nr.	Rev.
1	1	STETT FOR NY NS800/HR/RH	SG034	A-02
2	1	RØR ø80x4 KL=700mm	SAP-0403-700	0-1
3	1	FIRKANTTOPP NS800 UTEN GLIDESKINNER	DEL-306UG	A-01
4	1	TOPPFLENS	SAP-1581	0-1



Pos.	Ant.	Vare Navn	Vare Nr.	Rev.
1	1	SETE RAMME NS800 PL.6mm	SAP-0530	0-8
2	6	SKIVE Ø55X2	SAP-0009	0-1
3	1	RYGG PLATE NS800 2mm	SAP-0577	0-04
4	2	LÅSEBOLT M10X50	B413-M10X50	
5	2	FRIKSLINGS SKIVE FOR REG.RING	SAP-0146	0-1
6	2	KLEM SKIVE FOR RYGG REGULERING	MP154	0-1
7	2	RATT SORT Ø60 M/BOSS M10 m/Pregel SAP LOGO	RATT-028	0-1
8	2	STILLSKRUE Ø40 M8X40 RU A4/SORT PLAST	RATT-010	
9	2	SKIVE m/STOR DIAM.NYLON M8 DIN9021	B780-M8	
10	4	MUTTER M8 NYLOC DIN985	B462-M8	
11	2	PLUGG Ø25 2713 HEICO	PLA-0701	
12	2	SETEKILE STØPT	MP173	0-2
13	4	UNBRACO SENK M5X12	B420-M5X12	
14	2	BUNNMUTTER M8 POLYAMID NATUR	B755-M8N	
15*	2	MUTTER M8 DIN 934	B460-M8	
16	2	SKIVE M6 SYREFAST DIN125	B481-M6	
17	2	NYLOC MUTTER M6 DIN985	B462-M6	
18	1	SETEPLATE FOR NS 800 MOD.00A	SAP-0585	0-2
19	2	Hylse for armhviler NS800	MP222	0-01
20	1	NS800 ARMHVILER VENSTRE	3846V	A-02
21	1	NS800 ARMHVILER HØYRE	3846H	A-2
22	2	HØYDEJUSTERING FOR ARMHVILER	MP179	0-01
23	2	SKIVE m/STOR DIAM.M6(6,4x18x1,6)	B480-M6	
24	2	LÅSEBOLT M6X35	B413-M6X35	
25	2	LÅSEBOLT M8X40	B413-M8X40	
26	2	SKIVE m/STOR DIAM. M8(8,4x24x2)	B480-M8	
27*	2	GLIDESKINNE FOR NORSAP	DEL-125	A-3
28*	4	LÅSEBOLT M6X20	B413-M6X20	
29*	4	MUTTER M6 SELFLOCK m/RILLER DIN 6923	B463-M6	