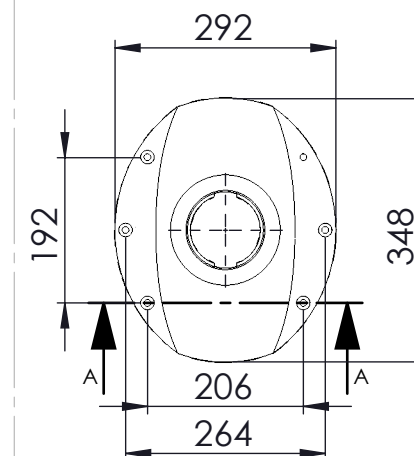
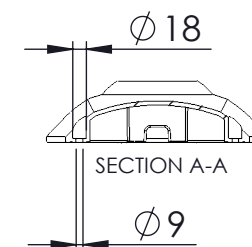


All sitting heights measured without load - a variation may occur depending on the load due to contraction of gas-struts, springs, upholstery and third part equipment.  
All information herein contained is subject to change without notice unless under contractual configuration control.  
Please consult Norsap if dimensions are critical or a certified drawing is required.  
[www.norsap.no](http://www.norsap.no)

Chair interface:



Weight: 76.03



Mjåvannsvegen 45/47  
NO 4626 Kristiansand (Norway)

Description:

**NS1100 without footrest**

Art.-No.:  
**5025**

Date:  
**18.12.2019**

Revision:  
**A 1**