

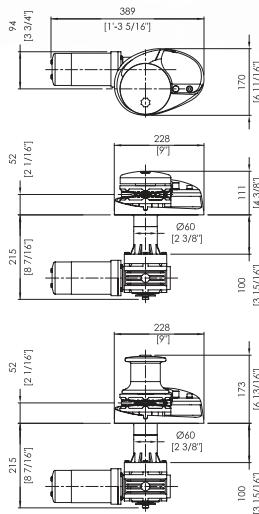
NEW **MUIR** VR/VRC850



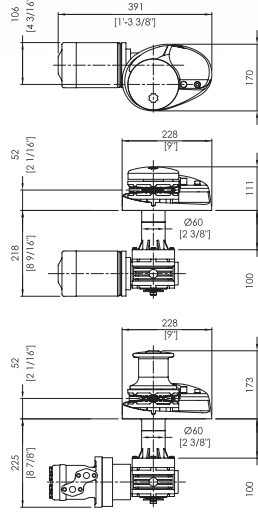
NEW **MUIR** VR/VRC1250



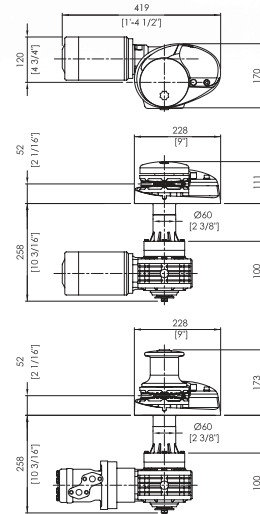
NEW **MUIR** VR/VRC2200



VESSEL LENGTH	8–11m 26–37ft
POWER SUPPLY (DC)	12/24V
MOTOR (WATTS)	800
AMPS WORK LOAD (DC)	75/40
MAX LOAD	450kg 992lb
WORK LOAD	150kg 330lb
MAX LINE SPEED	26m/min 85ft/min
CHAIN SIZE	6 mm (1/4") 8 mm (5/16") 10 mm (3/8")
ROPE/CHAIN	12mm (1/2") / 6mm (1/4") 14mm (9/16") / 8mm (5/16") 16mm (5/8") / 10mm (3/8")
MANUAL OPERATION	MOS (std on most gypsy sizes)



VESSEL LENGTH	10–13m 32–44ft
POWER SUPPLY (DC)	12/24/48V
MOTOR (WATTS)	1200
AMPS WORK LOAD (DC)	125/60
HYDRAULIC PRESSURE	8MPa 1160PSI
HYDRAULIC FLOW	15L/min 4gal/min
MAX LOAD	621kg 1369lb
WORK LOAD	207kg 456lb
MAX LINE SPEED	30m/min 98ft/min
CHAIN SIZE	6 mm (1/4") 8 mm (5/16") 10 mm (3/8")
ROPE/CHAIN	12mm (1/2") / 6mm (1/4") 14mm (9/16") / 8mm (5/16") 16mm (5/8") / 10mm (3/8")
MANUAL OPERATION	MOS (std on most gypsy sizes)



VESSEL LENGTH	12–15m 38–50ft
POWER SUPPLY (DC)	12/24V/48V
MOTOR (WATTS)	1500
AMPS WORK LOAD (DC)	150/70
HYDRAULIC PRESSURE	10MPa 1450PSI
HYDRAULIC FLOW	15L/min 4gal/min
MAX LOAD	1101kg 2427lb
WORK LOAD	367kg 809lb
MAX LINE SPEED	30m/min 98ft/min
CHAIN SIZE	6 mm (1/4") 8 mm (5/16") 10 mm (3/8")
ROPE/CHAIN	12mm (1/2") / 6mm (1/4") 14mm (9/16") / 8mm (5/16") 16mm (5/8") / 10mm (3/8")
MANUAL OPERATION	MOS (std on most gypsy sizes)

Features

- Polished stainless steel components
- High tensile stainless steel shaft
- Heavy duty, marine grade, dual-direction motor
- Superior, heavy-duty Oil bath worm drive gearbox
- Rope Chain Management System (RCMS) fitted
- Integrated quick release with chain pipe cover
- Self-lubricating bush
- Capstan models feature a knurled grip
- Independent gypsy and capstan operation
- Suits multiple global chain standards
- Deck isolation pad

Options

- Extra deck clearance kit for decks up to 150mm/6"
- Full range of accessories including chain, rope, chain stoppers, snubber kits and devil claws
- Electrical operating options and accessories
- Auto anchor - chain counter
- Anchor and Chain

*Inclusions can vary by country and region

Features

- Polished stainless steel components
- High tensile stainless steel shaft
- Heavy duty, marine grade, dual-direction motor
- Superior, heavy-duty Oil bath worm drive gearbox
- Rope Chain Management System (RCMS) fitted
- Integrated quick release with chain pipe cover
- Self-lubricating bush
- Capstan models feature a knurled grip
- Independent gypsy and capstan operation
- Suits multiple global chain standards
- Deck isolation pad

Options

- Extra deck clearance kit for decks up to 150mm/6"
- Full range of accessories including chain, rope, chain stoppers, snubber kits and devil claws
- Electrical operating options and accessories
- Auto anchor - chain counter
- Anchor and Chain

*Inclusions can vary by country and region

Features

- Polished stainless steel components
- High tensile stainless steel shaft
- Heavy duty, marine grade, dual-direction motor
- Superior, heavy-duty Oil bath worm drive gearbox
- Rope Chain Management System (RCMS) fitted
- Integrated quick release with chain pipe cover
- Self-lubricating bush
- Capstan models feature a knurled grip
- Independent gypsy and capstan operation
- Suits multiple global chain standards
- Deck isolation pad

Options

- Extra deck clearance kit for decks up to 150mm/6"
- Full range of accessories including chain, rope, chain stoppers, snubber kits and devil claws
- Electrical operating options and accessories
- Auto anchor - chain counter
- Anchor and Chain

*Inclusions can vary by country and region

NEW STORM



The New Storm Stainless Steel Range from Muir epitomises the latest in anchor windlass technology.

Designed for vessels 5–25m (16–83ft), and in low profile and capstan configurations, the Storm stainless steel windlasses offer fast powered retrieval, smooth rope chain combination operation, reduced installation time, style and unbeatable reliability.

Manufactured from polished stainless steel components the Storm windlass will weather the harshest of conditions.

Storm windlasses represent the pinnacle of reliability and performance and are packed with the features and quality you have come to expect from Muir. Designed on the principals of the award winning Atlantic series, with all its features and more...

The Storm stainless steel range is backed by a 3 year warranty and supported by an extensive worldwide sales and service network.

When precision engineering, exceptional performance, unwavering service, and quality-controlled design and manufacturing matter most, trust the all-new **Storm Stainless Steel Range** from Muir.



ANCHORING SYSTEMS | SINCE 1968



AUSTRALIA • EUROPE • USA • ASIA • PACIFIC •

Muir products are sold, serviced and supported worldwide.

Head Office: MUIR Windlasses Australia
100 Browns Road, Kingston Tasmania
7050, Australia

Tel int: +61 (0)3 6211 8811
Fax Int: +61 (0)3 6229 7030 Email:
info@muir.com.au



62nd
Australian
Export Awards
National Finalist
2024

©2006 Muir Engineering Pty. Ltd. Muir reserves the right to alter specifications without notice. All rights reserved. While all due care and attention has been taken in the preparation of this brochure no responsibility shall be taken for errors or omissions.

THIS BROCHURE SHOULD NOT BE USED FOR INSTALLATION PURPOSES Any reference to MUIR or MUIR'S in this brochure implies MUIR ENGINEERING PTY. LTD.

WWW.MUIR.COM.AU

Phone Number: 508-995-7000

Email: support@imtra.com.hs-inbox.com

Address: 30 Samuel Barnett Blvd., New Bedford, MA 02745 USA



ANCHORING SYSTEMS | SINCE 1968



NEW STORM

STAINLESS STEEL RANGE