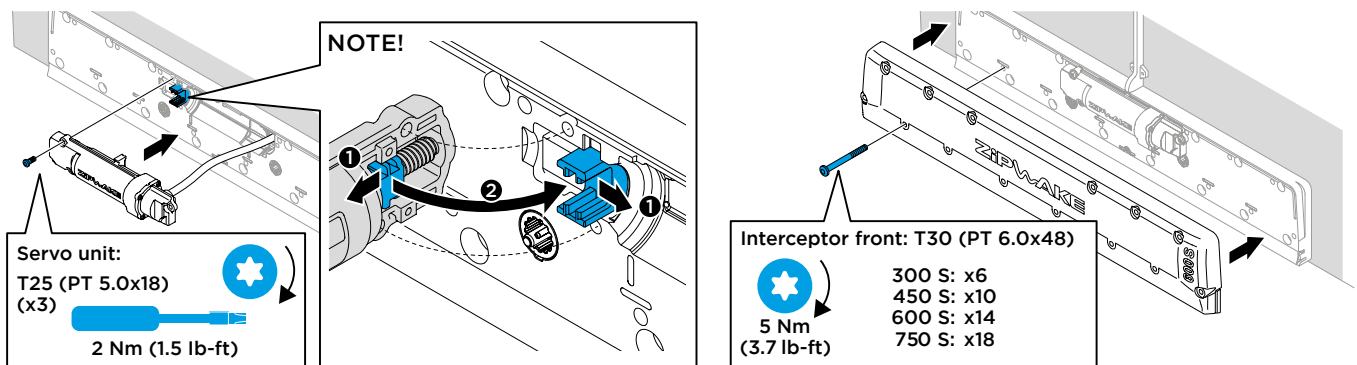


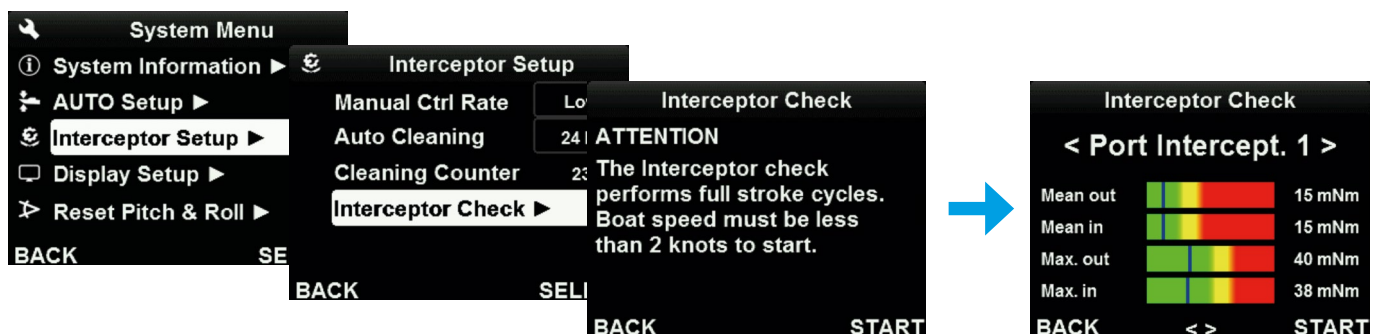
REINSTALLATION OF SU-S AND INTERCEPTOR FRONT

INSTALLING THE SERVO UNIT AND INTERCEPTOR FRONT

- Verify the connecting rod moves freely in the backplate.
- Verify the screw shaft nut is correctly fitted to the connecting rod in the backplate when mounting the servo unit. Tighten screws with designated torque (2 Nm).
- Verify the interceptor blades are moving easily (blades shall be easy to move by hand.)
- Reinstall the front and tighten the screws with designated torque (5 Nm).
- Run the Interceptor Check and verify that the blades are moving freely within tolerance range (all the readings of Interceptor Check are in green range). Document and archive the results for later reference.



Instructions of mounting the SU-S and the front to the backplate. Ensure screw shaft nut is fitted correctly to the backplate's connecting rod. Tighten the screws with designated torque (2 Nm and 5 Nm, respectively).



Starting Interceptor Check from the Control Panel menu.