



Norsap

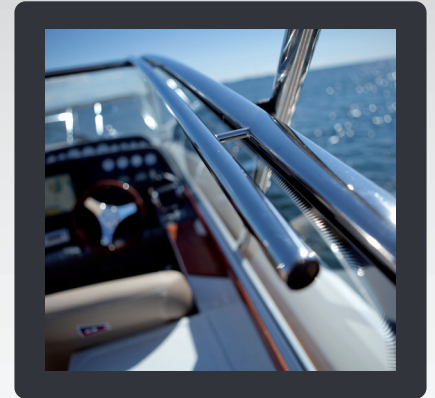
Pleasure Boat Equipment





All our products for
the pleasure boat
market have been
extensively tested

Norsap Pleasure Boat



Norsap is the leading manufacturer of helm chairs and marine equipment serving the world wide marine market.

We pride ourselves on supplying innovative and quality made products, while maintaining a stylish appearance that provides a consistent look throughout your boat.

All our boating equipment products go through extensive testing to ensure quality and long lasting performance.

Table of contents

Table pedestals.....	5
Seat pedestals.....	11
Seat accessories.....	15
Ladders.....	17
Footrest.....	18
Handrails & brackets ...	19

Please note changes may occur without notice.

© Norsap AS | 2020 | Photographs by Norsap, Windy Boats, Nimbus Boats and Grady-White Boats.

Norsap Table Pedestals



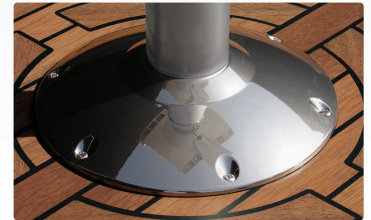
Norsap has created perfect solutions for marine pedestals with a large variety of options to satisfy every boater's needs.

Options such as a removable base, fixed height, adjustable height, and gas-dampened styles provide the right product for every user.

All pedestals are offered in standard anodized aluminum. The removable deck mounted pedestals have a flush surface mount deck flange made of 316 stainless steel.

Some of the models are available in other versions; glossy, silver metallic or white.

BL Glossy



SM Silver Metallic



SH White





1600 UD BL

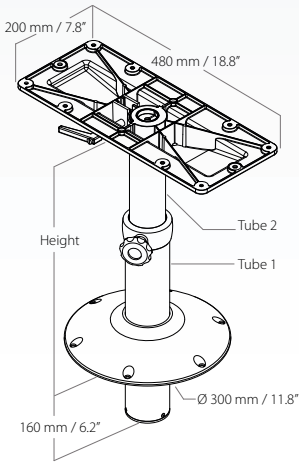


Table Pedestals - Adjustable Height

Sturdy telescopic table pedestal that allows easy height adjustment and table rotation. Can be delivered with pedestal through deck and not through deck. Combined with existing interior you may lower the table top to act as a spare bed. Recommended with gas adjustment for ease of use.

Features:

- 360° swivel and height adjustment
- Adjusts easily to desired position
- Can be lowered to provide an extra bed
- 4-Point flange top



Adjustable table pedestal, large

Adjustable height with fixed base.

Art.no	Description	Tube 1-2	Height
1610	Adjustable, through deck with gas	Ø 80-65 / 3.1-2.5"	360-690 mm / 14.1- 27.1"
1610 UD	Adjustable, not through deck with gas	Ø 80-65 / 3.1-2.5"	420-680 mm / 16.5- 26.7"

Adding **BL** after the article number indicates a version with a polished stainless steel base.

Table slider set

Table slider set that allows the table to slide (screws to fasten it to the table top included).

Art.no	Description	Height	Length	Width
Del-2103	Table slider set	20 mm / 0.7"	410 mm / 16.1"	39 mm / 1.5"

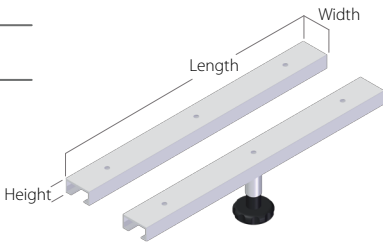


Table Pedestals - Adjustable Height

JSP table pedestal

Height and turn adjustable table pedestal. Can be combined with existing interior to create an extra bed. Table pedestal with medium base and 360° swivel. Through-deck hole allows manual height adjustment.

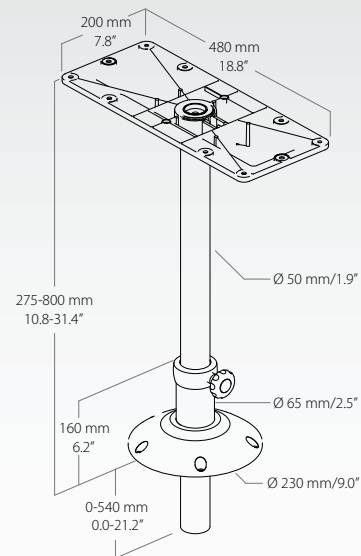
Space needed under deck 0-540 mm / 0-21.2" depending on height demand.

Features

- 360° swivel
- Medium base
- Through-deck hole allows manual height adjustment
- 4-point flange top

Art.no	Description
--------	-------------

1850	Fixed Table Pedestal, adjustable
------	----------------------------------



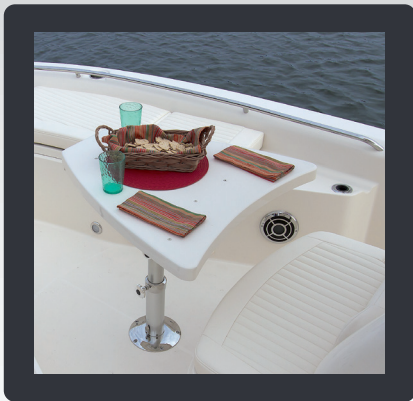


Table Pedestals - Movable

The Norsap removable table pedestals are designed for larger tables. The twist-lock base allows the table to be removed and stowed with only a flush deck mount left behind. Multiple mount locations are available with added deck flanges. The removable pedestal is designed to lock into the deck flange to prevent this twist-lock feature from loosening.

Features:

- Aluminum and 316 stainless steel for extreme marine environments
- Twist-lock design makes pedestal removal easy
- Adjustable height makes table suitable for dining
- Low-profile securing/locking mechanism



Removable table pedestal with twist-lock

Height adjustable table pedestal with twist-lock. Comes with twist-lock pedestal for easy mounting and removal of the pedestal. Flange protrudes only 15 mm / 0.5" from deck when pedestal is not in use.

Art.no	Description	Tube 1-2	Height (H1-H2)
2090-475720	Twist-lock	Ø 80-65 mm / 3.1-2.5"	475-720 mm / 18.7-28.3"
2091-475720	Twist-lock with gas	Ø 80-65 mm / 3.1-2.5"	475-720 mm / 18.7-28.3"

Removable table pedestal with twist-lock

Height adjustable table pedestal with twist-lock. Two step pedestal for widest range possible. Delivered on Twist-Lock flange that only protrudes 15 mm / 0.5" from deck when pedestal is not in use.

Art.no	Description	Tube 1-2-3	Height (H1-H2)
2091-403760	Twist-lock with gas	Ø 80-65-50 mm / 3.1-2.5-1.9"	403-760 mm / 15.9-29.9"
2091-419793	Twist-lock with gas	Ø 80-65-50 mm / 3.1-2.5-1.9"	419-793 mm / 16.5-31.2"
2095-403760	Twist-lock	Ø 80-65-50 mm / 3.1-2.5-1.9"	403-760 mm / 15.9-29.9"
2095-419793	Twist-lock	Ø 80-65-50 mm / 3.1-2.5-1.9"	419-793 mm / 16.5-31.2"

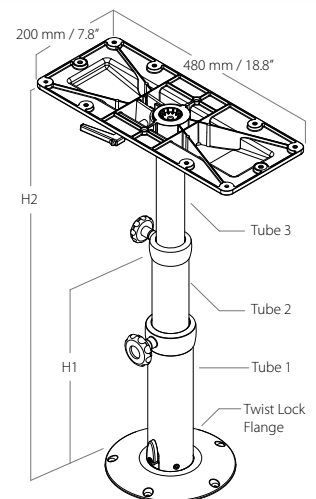
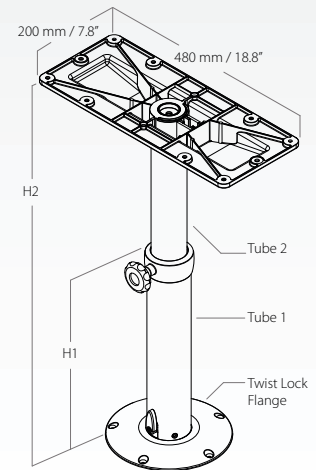


Table Pedestals - Movable

Sturdy movable table pedestals that require no hole in the deck, available in various heights. All pedestals are fitted to deck with a 2080 twist-lock flange. The pedestal comes in standard heights but can be cut to specific heights on request. The 2065 is also height adjustable, from 465mm-680mm.

Features:

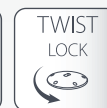
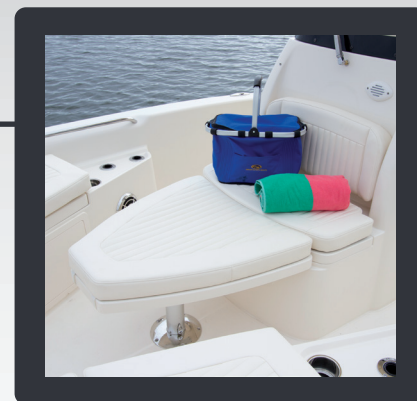
- Pedestal removes from base with quick twist and additional bases are available for multiple locations
- Fixed base and 360° swivel top

Movable table pedestal with twist-lock

Movable table pedestals with twist-lock feature for easy mounting and removal of the pedestal. Protrudes only 10 mm / 0.3" when pedestal is not in use.

Additional table top can be ordered separately.

Table top measures 200 x 200 mm / 7.8" x 7.8", Art.no: NSA2395.



Art.no	Description	Height	Tube	Top flange
2010-330	Movable pedestal	330 mm / 13.0"	Ø 50 mm / 1.9"	Ø 120 mm / 4.7"
2010-600	Movable pedestal	600 mm / 23.6"	Ø 50 mm / 1.9"	Ø 120 mm / 4.7"
2010-650	Movable pedestal	650 mm / 25.6"	Ø 50 mm / 1.9"	Ø 120 mm / 4.7"
2010-700	Movable pedestal	700 mm / 27.5"	Ø 50 mm / 1.9"	Ø 120 mm / 4.7"
2010-725	Movable pedestal	725 mm / 28.5"	Ø 50 mm / 1.9"	Ø 120 mm / 4.7"
2010-800	Movable pedestal	800 mm / 31.5"	Ø 50 mm / 1.9"	Ø 120 mm / 4.7"
2010-900	Movable pedestal	900 mm / 35.4"	Ø 50 mm / 1.9"	Ø 120 mm / 4.7"
2060-330	Movable pedestal	330 mm / 13.0"	Ø 65 mm / 2.5"	Ø 200 mm / 7.8"
2060-590	Movable pedestal	590 mm / 23.2"	Ø 65 mm / 2.5"	Ø 200 mm / 7.8"
2060-610	Movable pedestal	610 mm / 24.0"	Ø 65 mm / 2.5"	Ø 200 mm / 7.8"
2060-650	Movable pedestal	650 mm / 25.6"	Ø 65 mm / 2.5"	Ø 200 mm / 7.8"
2060-680	Movable pedestal	680 mm / 26.7"	Ø 65 mm / 2.5"	Ø 200 mm / 7.8"
2060-760	Movable pedestal	760 mm / 29.9"	Ø 65 mm / 2.5"	Ø 200 mm / 7.8"
2065-465-680	Movable pedestal	465-680 mm / 18.3-26.7"	Ø 65-50 mm / 2.5-1.9"	Ø 120 mm / 4.7"



Other heights are available upon request

Twist-lock deck flange

The Twist-lock deck flange requires no hole through the deck and the pedestal may be removed with a simple twist. Manufactured in polished stainless steel.

Art.no	Description	Deck Base	Fits pedestals	Height
2080	Deck flange	Ø 150 mm / 5.9"	50-65 mm / 1.9-2.5"	10 mm / 0.3"
2082	Deck flange	Ø 230 mm / 9.0"	80-100 mm / 3.1-3.9"	15 mm / 0.5"

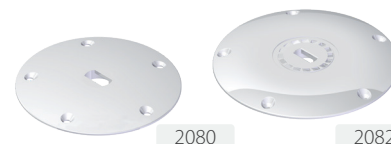


Table Pedestals - Fixed Height

Fixed height table pedestals, large

Robust and sturdy table pedestals. The fixed table pedestal with a 300 mm base and top flange offers high strength and stability at a low weight.



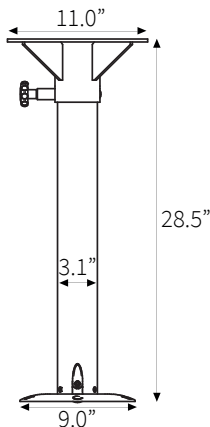
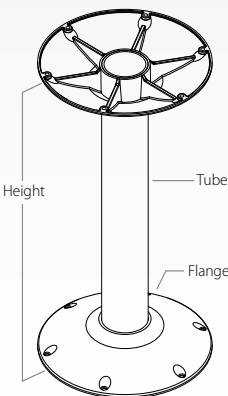
Art.no	Description	Height	Tube	Flange
7020	Fixed pedestal, white powder coated	700 mm / 27.5"	Ø 80 mm / 3.1"	Ø 300 mm / 11.8"
7020 BL	Fixed pedestal, SS316 Base Flange	700 mm / 27.5"	Ø 80 mm / 3.1"	Ø 300 mm / 11.8"
7020 SM	Fixed pedestal, silver lacquered	700 mm / 27.5"	Ø 80 mm / 3.1"	Ø 230 mm / 9.0"
7025	Fixed pedestal, grey powder coated	700 mm / 27.5"	Ø 65 mm / 3.1"	Ø 300 mm / 11.8"
7025 BL	Fixed pedestal, SS316 Base Flange	700 mm / 27.5"	Ø 65 mm / 3.1"	Ø 300 mm / 11.8"
7030	Fixed pedestal, grey powder coated	700 mm / 27.5"	Ø 65 mm / 3.1"	Ø 230 mm / 9.0"

Other heights are available upon request

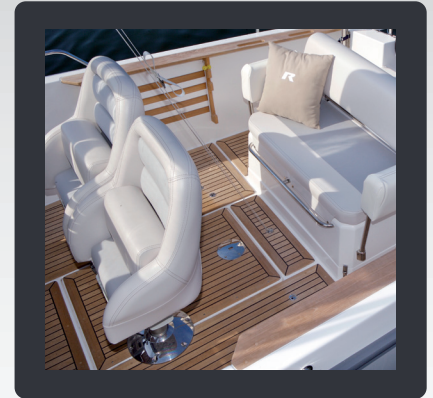
A sturdy movable table pedestal that is designed for larger tables. Secured to the deck with a 2082 twist-lock flange that allows for quick removal and easy stowage, only a flush deck flange left behind. Robust square top flange (NSDEL-306HV) included for table mounting.

Additional deck flanges available for multiple mounting locations.

Art.no	Description	Height	Tube	Deck Flange
46953-023	Table pedestal with top	724 mm / 28.5"	Ø 80 mm / 3.1"	Ø 230 mm / 9.0"



Norsap Seat Pedestals

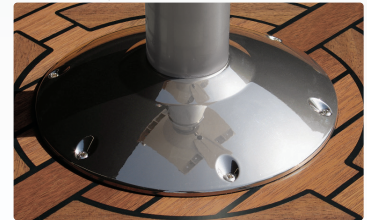


Norsap has a full selection of fixed height, adjustable height and gas dampened style seat pedestals suitable for all marine seat & table pedestal applications.

Tops can swivel freely and locks in the driving position. Options like seat sliders and 360° rotation are available.

Some of the models are available in other versions; glossy, silver metallic or white.

BL Glossy



SM Silver Metallic



SH White





Seat Pedestals - Fixed Height

Norsap has created perfect solutions for marine pedestals with a large variety of options to satisfy every boater's needs. Our seat pedestals are available in fixed height, adjustable height, and gas dampened style.



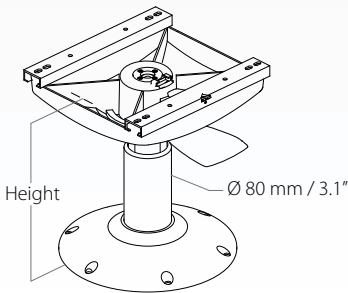
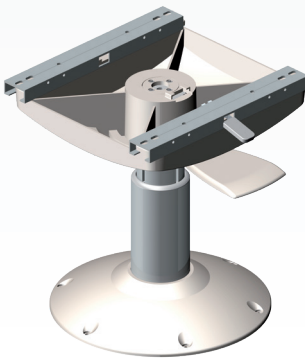
Seat pedestal - spring suspended

Fixed height, spring suspended seat pedestal with seat sliders and 360° swivel. The top can swivel freely and locks in the driving position. Available with release bar or without seat sliders.

Art.no	Description	Height
1400-350	Seat pedestal	350 mm / 13.7"
1400-400	Seat pedestal	400 mm / 15.7"
1400-450	Seat pedestal	450 mm / 17.7"
1400-500	Seat pedestal	500 mm / 19.7"
1400-550	Seat pedestal	550 mm / 21.6"
1400-600	Seat pedestal	600 mm / 23.6"



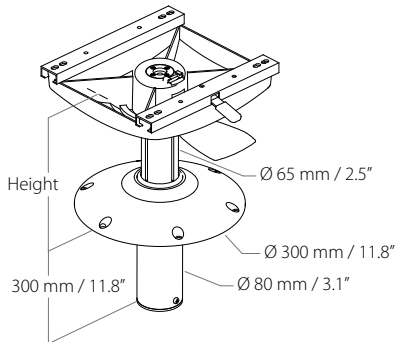
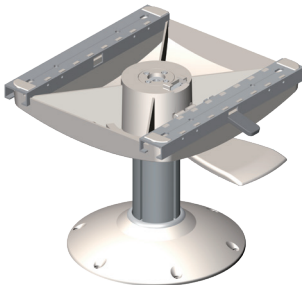
Adding **BL** after the article number indicates a version with a polished stainless steel base.



Seat pedestal - spring suspended - extra low

Fixed height, spring suspended seat pedestal with seat sliders and 360° swivel. The top can swivel freely and locks in the driving position. Available with release bar or without seat sliders.

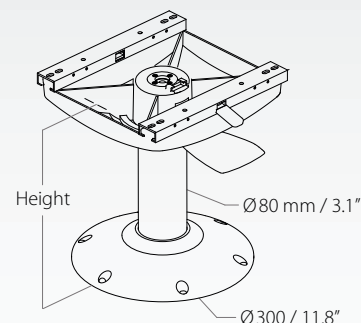
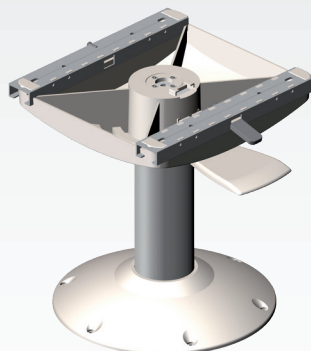
Art.no	Description	Height
1424 BL	Seat pedestal	280 mm / 11.0"



Fixed height seat pedestal with seat sliders and 360° swivel. The top can swivel freely and locks in the driving position.

Seat pedestal - large base

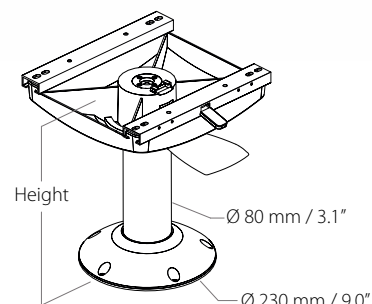
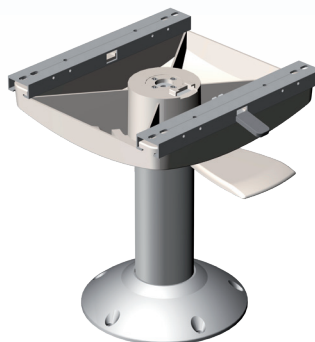
Art.no	Description	Height
1110-150	Seat pedestal	150 mm / 5.9"
1110-195	Seat pedestal	195 mm / 7.7"
1110-300	Seat pedestal	300 mm / 11.8"
1110-350	Seat pedestal	350 mm / 13.7"
1110-400	Seat pedestal	400 mm / 15.7"
1110-450	Seat pedestal	450 mm / 17.7"
1110-500	Seat pedestal	500 mm / 19.7"
1110-550	Seat pedestal	550 mm / 21.6"
1110-600	Seat pedestal	600 mm / 23.6"
1110-650	Seat pedestal	650 mm / 25.6"
1110-700	Seat pedestal	700 mm / 27.5"
1110-750	Seat pedestal	750 mm / 29.5"
1110-800	Seat pedestal	800 mm / 31.5"



Adding **BL** after the article number indicates a version with a polished stainless steel base.

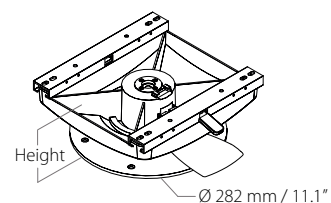
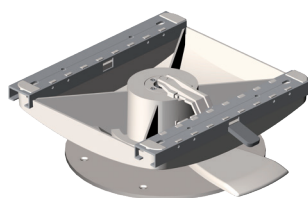
Seat pedestal - medium base

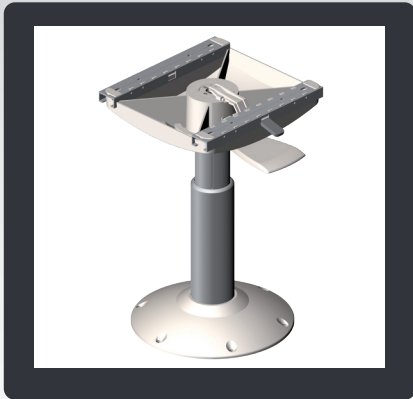
Art.no	Description	Height
1111-150 SM	Seat pedestal	150 mm / 5.9"
1111-195 SM	Seat pedestal	195 mm / 7.7"
1111-300 SM	Seat pedestal	300 mm / 11.8"
1111-350 SM	Seat pedestal	350 mm / 13.7"
1111-400 SM	Seat pedestal	400 mm / 15.7"
1111-450 SM	Seat pedestal	450 mm / 17.7"
1111-500 SM	Seat pedestal	500 mm / 19.7"
1111-550 SM	Seat pedestal	550 mm / 21.6"
1111-600 SM	Seat pedestal	600 mm / 23.6"



Seat pedestal - extra low

Art.no	Description	Height
1182	Seat pedestal	120 mm / 4.7"





Seat Pedestals - Adjustable Height

Norsap has created perfect solutions for marine pedestals with a large variety of options to satisfy every boater's needs. Our seat pedestals are available in fixed height, adjustable height, and gas damped style.

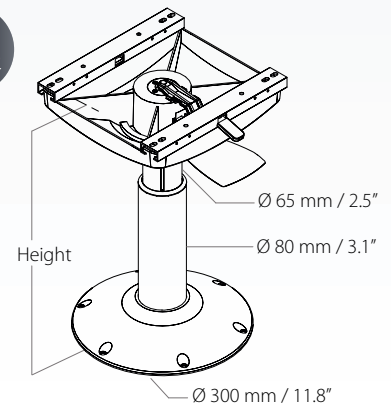


Seat pedestal - gas suspended

Seat pedestals with smooth height adjustment, gas suspension, seat sliders and 360° swivel. The top can swivel freely and locks in the driving position. The large handle controls both rotation and height adjustment. Also available with release bar or without seat sliders.

Art.no	Description	Height
1476	Seat pedestal	325-420 mm / 12.8 - 16.5"
1479	Seat pedestal	360-490 mm / 14.1 - 19.2"
1481	Seat pedestal	440-550 mm / 17.3 - 21.6"
1487	Seat pedestal	500-750 mm / 19.7 - 29.5"
1486	Seat pedestal	575-800 mm / 22.6 - 31.5"

Adding **BL** after the article number indicates a version with a polished stainless steel base.





Seat Accessories

Different solutions for compiling your own chair.

Seat slider set

Seat slider set with cover plate and release bar in front. The release bar can be adjusted in three different positions within 70 mm / 2.7" to accommodate the seat. Total sliding distance is 160 mm / 6.3 in.

Art.no	Description	Width	Hole distance
3750	Seat slider set	300 mm / 11.8"	260 mm / 10.2"
3751-390	Seat slider set	390 mm / 15.3"	350 mm / 13.7"
3751-600	Seat slider set	600 mm / 23.6"	560 mm / 22.0"
3751-640	Seat slider set	640 mm / 25.1"	600 mm / 23.6"
3751-740	Seat slider set	740 mm / 29.1"	700 mm / 27.5"



Seat swivel plates

A great alternative when you require 360° seat swivel and low overall height. Comes in four versions.

Art.no	Description	Height
3770	Seat swivel plate w/slider and release bar	42 mm / 1.6"
3771V	Seat swivel plate w/slider and release lever on left	40 mm / 1.57"
3771H	Seat swivel plate w/slider and release lever on right	40 mm / 1.57"
3773	Seat swivel plate only	30 mm / 1.18"



3770



3771V



3771H

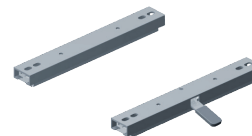


3773

Seat slider set lever release

Seat slider set that allows the seat to slide a total distance of 160 mm / 6.3" fore and aft.

Art.no	Description	Height	Length	Width
3701	Seat slider set	26 mm / 1.0"	310 mm / 12.2"	40 mm / 1.6"



Norsap Accessories

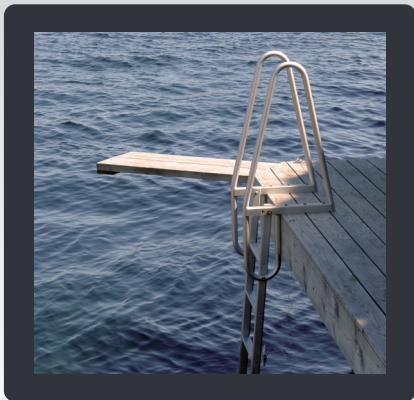


Access your boat or dock with a ladder from Norsap. We offer landing stage ladders and emergency ladders, produced in natural anodized aluminum.

Our handrail systems have solid and firm brackets for handrail tubes.

- Landing stage ladder
- Emergency ladder
- Footrest
- Handrails and Brackets

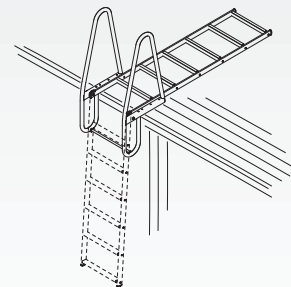




Landing Stage Ladder

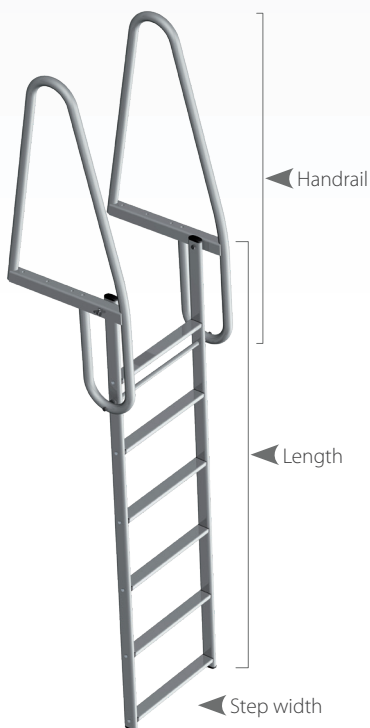
Access your boat or dock with ladders from Norsap. We offer landing stage ladders with four, six or eight rungs. The ladder is produced in natural anodized aluminum with wide steps and solid handrails – easy to install. The ladder can be flipped up onto the dock when not in use.

The ladder can be removed for winter storage.



Technical information

- Max width of complete ladder is 540 mm / 21.2"



Features:

- Easy to install
- Flip up onto the dock when not in use
- Wide steps and sturdy grip
- Manufactured in seawater resistant, anodized aluminum
- Stainless steel screws included (art.no 4350-200)

Landing stage ladder

Landing stage ladder with four, six or eight rungs.

Art.no	Description	Rungs	Ladder length	Step width	Total length	Weight
4351	Ladder	4	1150 mm / 45.2"	400 mm / 15.7"	1950 mm / 76.7"	9.5 Kg
4350	Ladder	6	1700 mm / 67.0"	400 mm / 15.7"	2500 mm / 98.4"	11 Kg
4352	Ladder	8	2240 mm / 88.1"	400 mm / 15.7"	3040 mm / 119.6"	14 Kg

Landing stage handrails

Landing stage handrails.

Art.no	Description	Height over dock	Height below	Depth
4360	Handrails for 4 and 6 rung ladder	800 mm / 31.5"	350 mm / 13.7"	500 mm / 19.7"
4361	Handrails for 8 rung ladder	800 mm / 31.5"	900 mm / 35.4"	500 mm / 19.7"

Emergency Ladder

Smaller vessels are required to provide emergency ladders. Our two and three rung-hinged ladders are easy to mount and use. When not in use, the ladder is flipped up and held in place by a plastic clip (included).



Hinged emergency ladder

Norsap emergency ladders with two or three rungs. The ladders are supplied with one plastic clip. Additional clips available.

Art.no	Description	Rungs	Length	Width
4250	Emergency ladder	2	410 mm / 16.1"	295 mm / 11.6"
4251	Emergency ladder	3	600 mm / 23.6"	295 mm / 11.6"

PLA-12D28 Additional plastic clip for Norsap's hinged emergency ladders (one included)



Footrest

Norsap footrest is suitable for Ø 80 mm/ 3.1" diameter pedestal tubes. Adjustable in height, flips up and swivels with the chair.

Technical information

Length from Ø 80 mm/3.1 in center:

Foot loop folded	545 mm / 21.5"
Foot loop unfolded	660 mm / 26"
Width	450 mm / 17.7"

Footrest

Footrest with extension, white with tread plate and foot loop.

Art.no	Description
6211 SH	Footrest, white with tread plate and foot loop



Handrails & Brackets

Handrail system in natural anodized aluminum. Solid and firm brackets for handrail tubes. We recommend a bracket for each 600 mm / 23.6" length of handrail.



Handrail tube and end plugs

Handrail tube in natural anodized aluminum. The tube is oval 35 x 20 mm / 1.4 x 0.8". Delivered in standard lengths of 2, 3 and 6 meters / 78.7, 118.1, 236.2 inches.

Art.no	Description
3500	Handrail tube
3580	End plug for handrail, grey
3581	End plug for handrail, black

3500	Handrail tube
3580	End plug for handrail, grey
3581	End plug for handrail, black

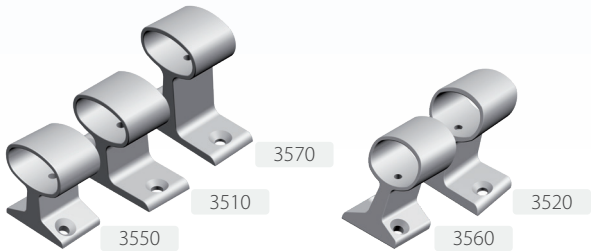


Handrail brackets

Handrail brackets in natural anodized aluminum. 53 mm / 2.0" height.

Art.no	Description
3550	Bracket with screw lock, straight with narrow foot (45 mm / 1.7")
3510	Bracket with screw lock, straight
3570	Bracket with screw lock, straight and tall (68 mm / 2.7")
3560	Bracket with screw lock, 30° with narrow foot (45 mm / 1.7")
3520	Bracket with screw lock, 30°

3550	Bracket with screw lock, straight with narrow foot (45 mm / 1.7")
3510	Bracket with screw lock, straight
3570	Bracket with screw lock, straight and tall (68 mm / 2.7")
3560	Bracket with screw lock, 30° with narrow foot (45 mm / 1.7")
3520	Bracket with screw lock, 30°

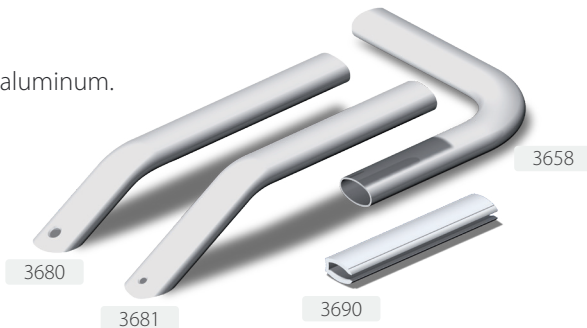


Handrail endings, corner and internal joining profile

Handrail end piece, section bend and internal joining piece in natural anodized aluminum.

Art.no	Description
3658	Handrail section, 90° horizontal bend (200 x 200 mm / 7.9 x 7.9")
3680	Handrail end piece, low version (50 mm / 1.9")
3681	Handrail end piece, tall version (65 mm / 2.5")
3690	Handrail internal joining piece, length = 140 mm / 5.5"

3658	Handrail section, 90° horizontal bend (200 x 200 mm / 7.9 x 7.9")
3680	Handrail end piece, low version (50 mm / 1.9")
3681	Handrail end piece, tall version (65 mm / 2.5")
3690	Handrail internal joining piece, length = 140 mm / 5.5"





30 Samuel Barnet Boulevard • New Bedford, MA 02745
508.995.7000 • www.imtra.com