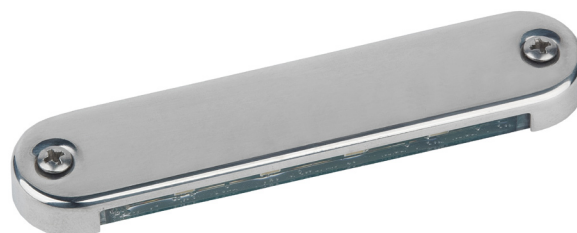


## Duxbury LED

The Duxbury LED courtesy light is the ideal courtesy & step light for indirect lighting applications. It contains four "hidden" low power SMD LEDs that project their subtle non-glare illumination in a downward direction to effectively illuminate steps and walkways. The flat profile and slightly rounded edges make them ideal for stair risers. The all stainless steel cover is securely installed with screws over the fully sealed and potted LED sub-assembly resulting in secure mounting and a 100% waterproof installation. They draw minimal power, run cool, and are completely maintenance free. Two finishes and three LED colors to choose from.

### An excellent choice for:

- Stair risers
- Companionways
- Low level cockpit illumination



Duxbury LED

### Features

- AISI 316 stainless steel bezel
- Completely sealed & potted LED sub-assembly
- Surface mount installation
- Constant current driver
- Low power SMD LEDs

### Benefits

- Maintenance free finish
- Completely waterproof
- Easy installation (just 2 screws)
- Up to 50,000 hrs life
- Miniscule power consumption



## Advanced LED Solutions

Imtra is at the forefront in the development of LED products for today's marine market.

We are proud to offer a family of first-in-class high flux LED lights that combine proprietary drive electronics with advanced optics and efficient thermal management techniques.

Imtra PowerLEDs let builders and boat owners enjoy all the advantages of the latest LED technology, backed by Imtra's expertise and support.

To see our full line of LED products, visit [www.imtra.com](http://www.imtra.com).

[www.imtra.com](http://www.imtra.com)



Photo: Seaguy

## Product Details

### Visual

#### Finish Options



Stainless Steel  
IP65



White Powder Coat  
IP65

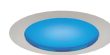
#### Color Options



Warm White



Cool White



Blue

### Mechanical

Housing Material      AISI 316 Stainless Steel

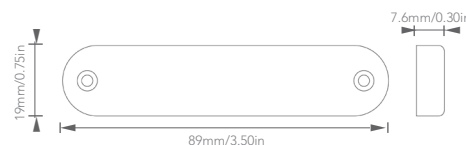
Mounting Method      Surface Mount/Screws 

#### Dimensions

Length: 3.50" (89mm)

Width: 0.75" (19mm)

Height: 0.30" (7.6mm)



### Electrical

Power Consumption      0.48W @ 12V / 0.96W @ 24V

Voltage      10-30VDC

Protections      200V Spike Protection  
Reverse Polarity  
Transient Protection

### Certifications



© 2010 Imtra Corporation. All rights reserved. Specifications are subject to change without notice.