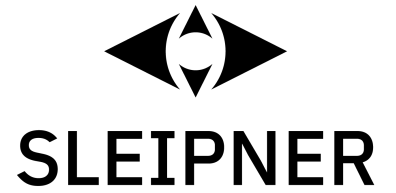


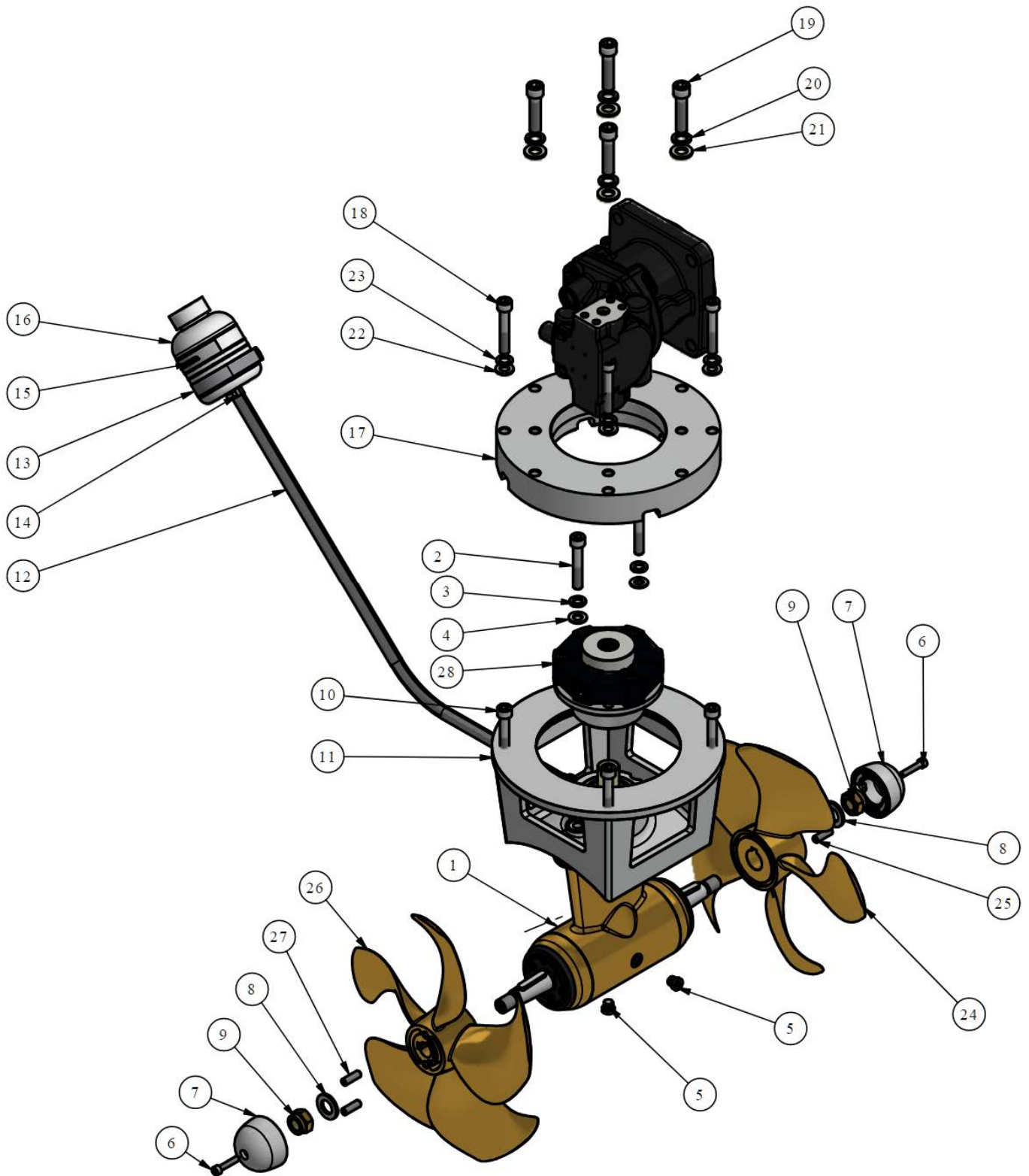
# SH400/300TC-BA23

## SH400 Tunnel bow/stern thruster

### hydraulic BA23



Spare parts (valid from 2020-06-25)



#	Name	Item Code	Description
1	Gearleg w/out propellers	SM-135548	Gearleg w/out propeller SH400 complete
2	Bolt DIN912 M10 X 60 A4		
3	Spring lock washer DIN127 A10 - A4		
4	Flat washer DIN125 A10,5 - A4		
5	Oil plug M10 with gasket	HS7504-00-10S	Oil plug M10
6	Bolt DIN912 M6 X 30 A4	20 1172	Bolt M6 x 30 Unbraco
7	Anode	SM-139671	Anode
8	Flat washer DIN125 A17 - A4	20 1181	Flat washer M16 A4
9	DIN 985 - M16x2	10 1260	DIN985 M16 CZ132
10	Bolt DIN912 M10 X 60 A4		
11	Motor bracket	SM-131210	Motorbrakett SE300 maskinert
12	Oil hose	6 1042	Oil hose SH1000/1400
13	Clip	6 1031	Fastener clip for oil container
14	Hose clamp	6 1043	Hose clamp Ø15MM-A4
15	Lable		
16	Oil container	6 1030	Oil container
17	Adapter flange BA23	SM-141871	Adapter flange BA23
18	Bolt DIN912 M10 X 60 A4		
19	Bolt DIN912 M12 X 50 A4		
20	Spring lock washer DIN128 A12 - A4		
21	Flat washer DIN125 A13 - A4		
22	Flat washer DIN125 M10 A10,5 - A4		
23	Spring lock washer DIN 128 A10 - A4		
24	Q-Prop RH	SM-139895	Thruster propeller Q-prop RH SH400
25	Bolt DIN916 M8 x 25 A4	SM-141818	Bolt M8 x 25
26	Q-Prop LH	SM-139667	Thruster propeller Q-prop LH SH400
27	Bolt DIN916 M8 x 25 A4	SM-141818	Bolt M8 x 25
28	Flex. coupl. CFA8-Ø24/SAE-C	10 5008-24-C14	Flexible coupling CFA8-Ø24/SAE-C

The installer alone has responsibility for the installation of the spare parts. Side-Power only warranty the spare parts supplied only.

The information given in the document was correct at the time it was published. However, Sleipner Motor AS can not accept liability for any inaccuracies or omissions it may contain. Continuous product improvement may change the product specifications without notice. Therefore, Sleipner Motor AS can not accept liability for any possible differences between product and document.