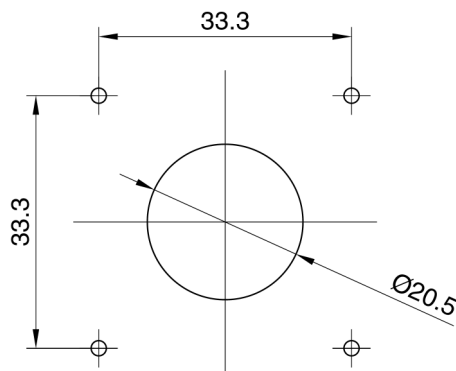


## AA300 Series Socket Template and Wiring



Dimensions in mm.

### WIRING CONNECTIONS



**THE POWER SUPPLY MUST BE DISCONNECTED WHEN INSTALLING, CONNECTING OR CHANGING THE WIRING**

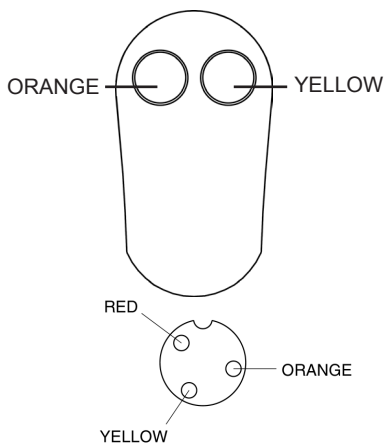
Follow the wiring diagram for electrical connections.

Ensure the controls are connected to operate in the correct direction.

Colour match the buttons to the wires.

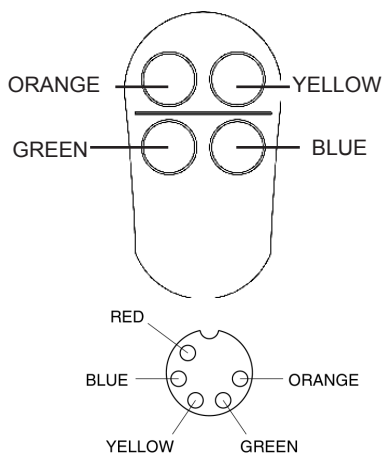
Red is the Common Positive (+)

#### 2 BUTTON CONFIGURATION



3P SOCKET PIN ASSIGNMENT  
(Front View)

#### 4 BUTTON CONFIGURATION



5P SOCKET PIN ASSIGNMENT  
(Front View)

AutoAnchor

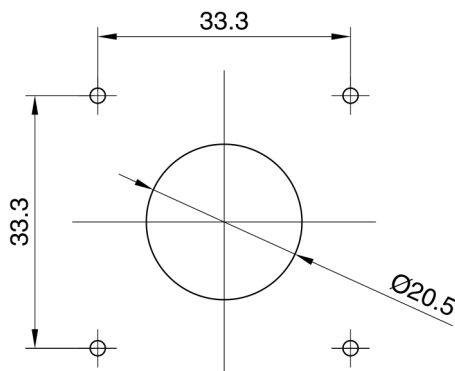
Tel: +64 9 419 1219 Fax: +64 9 419 1931

Email: [info@autoanchor.co.nz](mailto:info@autoanchor.co.nz) Web: [www.autoanchor.co.nz](http://www.autoanchor.co.nz)

AutoAnchor is a trademark of RMSD Limited Copyright © 2010 RMSD Limited, New Zealand 02/10



## AA300 Series Socket Template and Wiring



Dimensions in mm.

### WIRING CONNECTIONS



**THE POWER SUPPLY MUST BE DISCONNECTED WHEN INSTALLING, CONNECTING OR CHANGING THE WIRING**

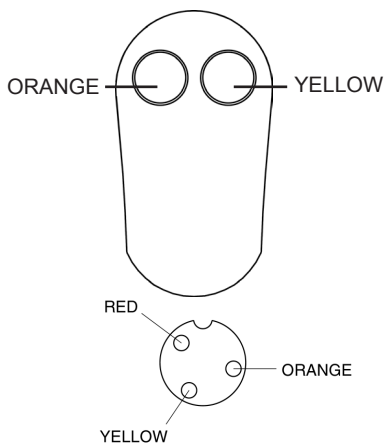
Follow the wiring diagram for electrical connections.

Ensure the controls are connected to operate in the correct direction.

Colour match the buttons to the wires.

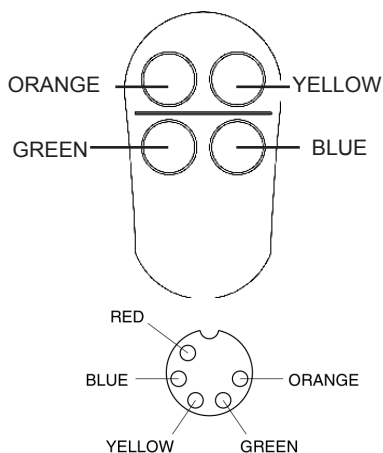
Red is the Common Positive (+)

#### 2 BUTTON CONFIGURATION



3P SOCKET PIN ASSIGNMENT  
(Front View)

#### 4 BUTTON CONFIGURATION



5P SOCKET PIN ASSIGNMENT  
(Front View)

AutoAnchor

Tel: +64 9 419 1219 Fax: +64 9 419 1931

Email: [info@autoanchor.co.nz](mailto:info@autoanchor.co.nz) Web: [www.autoanchor.co.nz](http://www.autoanchor.co.nz)

AutoAnchor is a trademark of RMSD Limited Copyright © 2010 RMSD Limited, New Zealand 02/10

