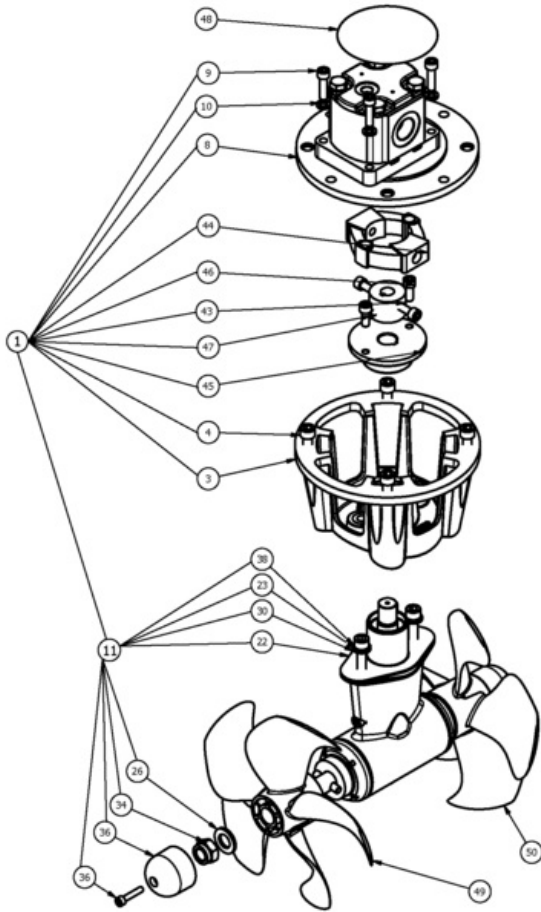


# SH240/250TC-U11

## SH240 Tunnel bow/stern thruster hydraulic U11

Spare parts (valid from 2020-07-14)



#	Name	Item Code	Description
1	SH240 / 250TC 8-19ccm	72100/U-11	Hydraulic motor 11ccm ultra
3	Engine bracket SE130-170		01-02-125-105
4	DIN 912 - M10 x 25	10 1360	Bolt M10 x 25 Unbraco
8	Hydplate	10 21301	Adaptor plate SH100/240
9	DIN 912 - M8 x 30	6 1360	Bolt M8 x 30 Unbraco
10	DIN 127 - A 8	208127	Spring lock washer M8 A4
11	Girhus mont. u / propeller		SM159957
22	10 1312 Gasket SE130-170 2mm	10 1312	Gasket for gearleg installation in tunnel, SE130
23	DIN 128 - A10	10 1363	Spring lock washer M10 A2
26	DIN 125 - A 17	20 1181	Flat washer M16 A4
30	DIN 125 - A 10.5	10 1362	Flat washer M10 A2
34	DIN 985 - M16x2	10 1260	DIN985 M16 CZ132
36	Alu anode		SM-143716
38	DIN 912 - M10 x 50	10 1080	Bolt M10 x 50 Unbraco
43	Cylindrical boss N1, Ø15, L-28mm		SM-102785
44	Flex coupling element size 2		SM-102788
45	Flex coupling metal to 20 1450		SM-103009
46	DIN 912 - M8 x 20	11820	Bolt M8 x 20 Unbraco
47	DIN 916 - M6 x 12	10612	Gjengestift
48	Label		SM-120822
49	Propeller Ø250 RH	10 1271 RH	Thruster propeller ø250 RH
50	Propeller Ø250 LH	10 1271 LH	Thruster propeller ø250 LH

The installer alone has responsibility for the installation of the spare parts. Side-Power only warranty the spare parts supplied only.

The information given in the document was correct at the time it was published. However, Sleipner Motor AS can not accept liability for any inaccuracies or omissions it may contain. Continuous product improvement may change the product specifications without notice. Therefore, Sleipner Motor AS can not accept liability for any possible differences between product and document.