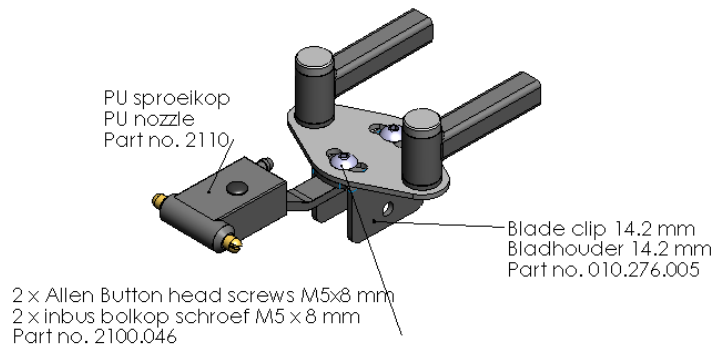


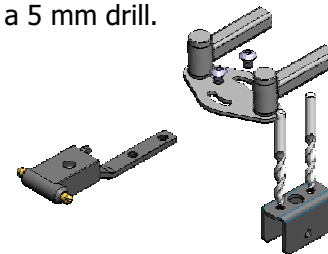
When fitting a nozzle type 2110 to a pantograph arm with center T-piece/blade clip, the following actions need to be taken.



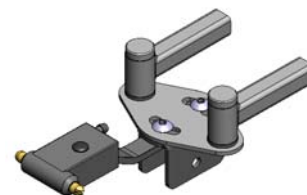
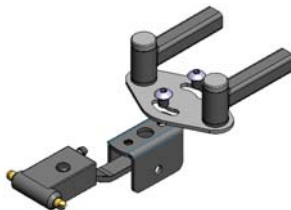
Disassemble blade clip from center T-piece by removing the two M5 Button Head Screws.



Drill out the two M5 threads in the top of the blade clip using a 5 mm drill.



Re-assemble the blade clip in-between washing jet and T-piece, with supplied fasteners.



- Do not fully tighten the two screws
- Adjust the position of the blade(clip) in the parking position of the arm
- Tighten the two screw properly with an Allen Wrench of the proper size

