



The Offshore & Pitmaster Series Deck Lights



www.imtra.com

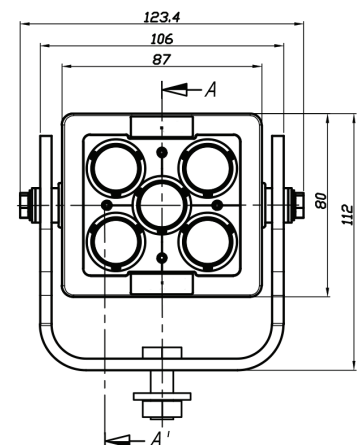
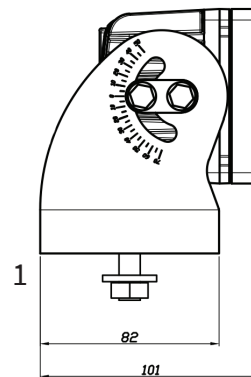
Offshore 5-LED

Powered by 



PRODUCT DETAILS

Raw Lumens	4,400
Effective Lumens	3,305
Current Draw	2.92A/12VDC, 1.46A/24VDC
Wattage	35W
Weight	1.19kg / 2.62lb
Beam Angle Options	10°, 25°, 40°, 60°, 90°, 30x65°
Color Temperature	5,700 Kelvin
Input Voltage	11 - 65VDC
Wattage per LED	7W
IP Rating	IP68/IP69K
Vibration Dampened & Shock Proof	60 Grms
EMC/EMI Rating	CISPR 25 - Class 1
Cable Length	6' x 16awg duplex boat cable
Lens	Polycarbonate
Environmental Coating	Interpon 810
Bracket Material	304 Stainless Steel
Finish Options	White or Black
Warranty	5 Years
Safety Standards Compliance	CE, ROHS, IEC 6247



NARROW FLOOD BEAM (25°)

Part No. ILBMB070525 (black), ILBMW070525 (white)



FLOOD BEAM (40°)

Part No. ILBMB070540 (black), ILBMW070540 (white)



WIDE FLOOD BEAM (60°)

Part No. ILBMB070560 (black), ILBMW070560 (white)



SUPER WIDE FLOOD BEAM (90°)

Part No. ILBMB070590 (black), ILBMW070590 (white)



ELLIPTICAL BEAM (30x65°)

Part No. ILBMB07053065 (black), ILBMW07053065 (white)



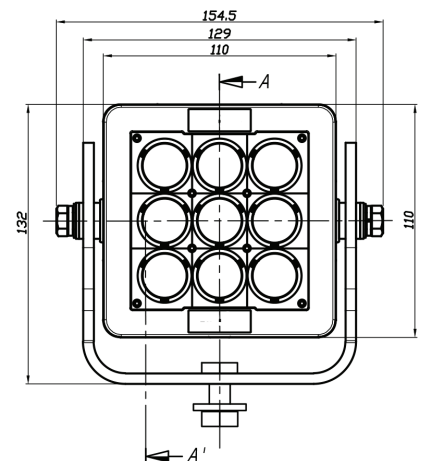
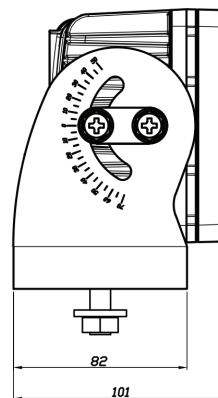
Offshore 9-LED

Powered by 



PRODUCT DETAILS

Raw Lumens	7,920
Effective Lumens	5,734
Current Draw	5.25A/12VDC, 2.62A/24VDC
Wattage	63W
Weight	1.68kg / 3.70lb
Beam Angle Options	10°, 25°, 40°, 60°, 90°, 30x65°
Color Temperature	5,700 Kelvin
Input Voltage	11 - 65VDC
Wattage per LED	7W
IP Rating	IP68/IP69K
Vibration Dampened & Shock Proof	60 Grms
EMC/EMI Rating	CISPR 25 - Class 1
Cable Length	6' x 16awg duplex boat cable
Lens	Polycarbonate
Environmental Coating	Interpon 810
Bracket Material	304 Stainless Steel
Finish Options	White or Black
Warranty	5 Years
Safety Standards Compliance	CE, ROHS, IEC 6247



NARROW FLOOD BEAM (25°)

Part No. ILBMB070925 (black), ILBMW070925 (white)



FLOOD BEAM (40°)

Part No. ILBMB070940 (black), ILBMW070940 (white)



WIDE FLOOD BEAM (60°)

Part No. ILBMB070960 (black), ILBMW070960 (white)



SUPER WIDE FLOOD BEAM (90°)

Part No. ILBMB070990 (black), ILBMW070990 (white)



ELLIPTICAL BEAM (30x65°)

Part No. ILBMB07093065 (black), ILBMW07093065 (white)



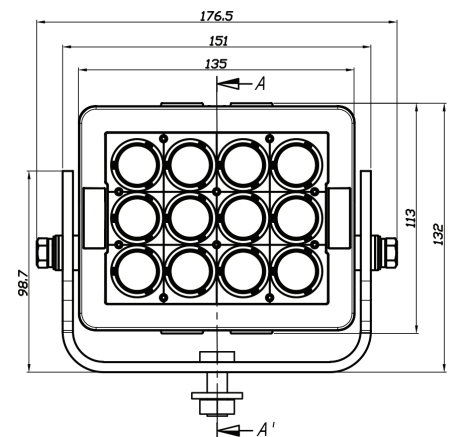
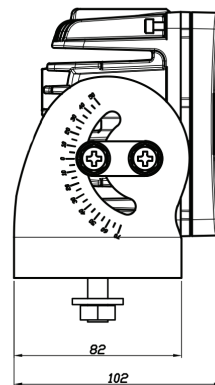
Offshore 12-LED

Powered by 



PRODUCT DETAILS

Raw Lumens	10,560
Effective Lumens	6,679
Current Draw	7.0A/12VDC, 3.5A/24VDC
Wattage	84W
Weight	2.56kg / 5.64lb
Beam Angle Options	10°, 25°, 40°, 60°, 90°, 30x65°
Color Temperature	5,700 Kelvin
Input Voltage	11 - 65VDC
Wattage per LED	7W
IP Rating	IP68/IP69K
Vibration Dampened & Shock Proof	60 Grms
EMC/EMI Rating	CISPR 25 - Class 1
Cable Length	6' x 16awg duplex boat cable
Lens	Polycarbonate
Environmental Coating	Interpon 810
Bracket Material	304 Stainless Steel
Finish Options	White or Black
Warranty	5 Years
Safety Standards Compliance	CE, ROHS, IEC 6247



NARROW FLOOD BEAM (25°)

Part No. ILBMB071225 (black), ILBMW071225 (white)



FLOOD BEAM (40°)

Part No. ILBMB071240 (black), ILBMW071240 (white)



WIDE FLOOD BEAM (60°)

Part No. ILBMB071260 (black), ILBMW071260 (white)



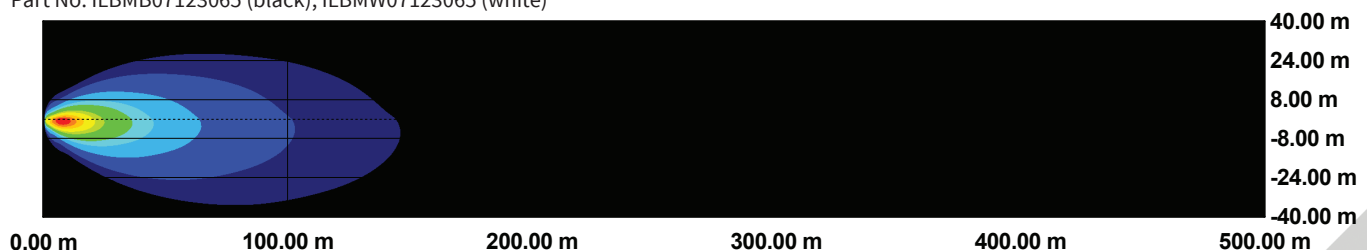
SUPER WIDE FLOOD BEAM (90°)

Part No. ILBMB071290 (black), ILBMW071290 (white)



ELLIPTICAL BEAM (30x65°)

Part No. ILBMB07123065 (black), ILBMW07123065 (white)



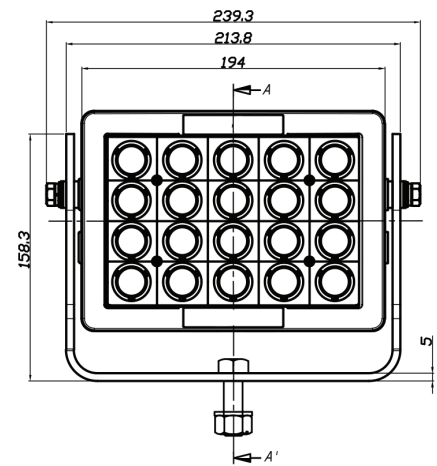
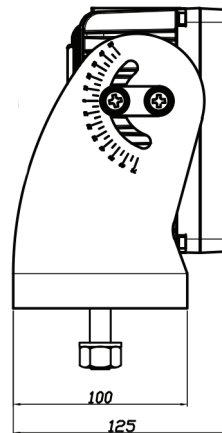
Offshore 20-LED

Powered by 



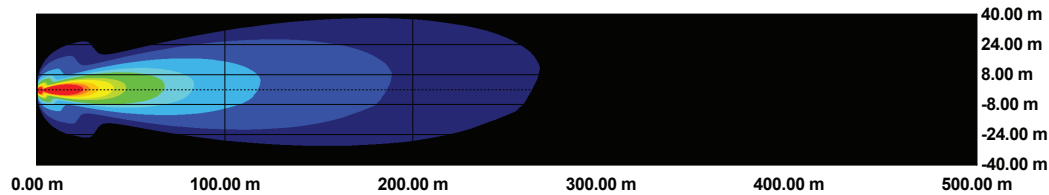
PRODUCT DETAILS

Raw Lumens	17,600
Effective Lumens	11,270
Current Draw	11.7A/12VDC, 5.83A/24VDC, 1.17A/120VAC
Wattage	140W
Weight	4.5kg / 9.92lb
Beam Angle Options	10°, 25°, 40°, 60°, 90°, 30x65°
Color Temperature	5,700 Kelvin
Input Voltage	11 - 65VDC or 110 - 277VAC
Wattage per LED	7W
IP Rating	IP68/IP69K
Vibration Dampened & Shock Proof	60 Grms
EMC/EMI Rating	Cisper 25 Class 1
Cable Length	6' x 14awg duplex boat cable
Lens	Polycarbonate
Environmental Coating	Interpon 810
Bracket Material	304 Stainless Steel
Finish Options	White or Black
Warranty	5 Years
Safety Standards Compliance	CE, ROHS, IEC 6247



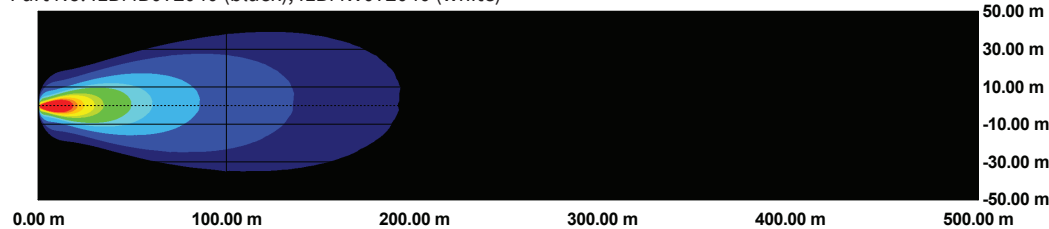
NARROW FLOOD BEAM (25°)

Part No. ILBMB072025 (black), ILBMW072025 (white)



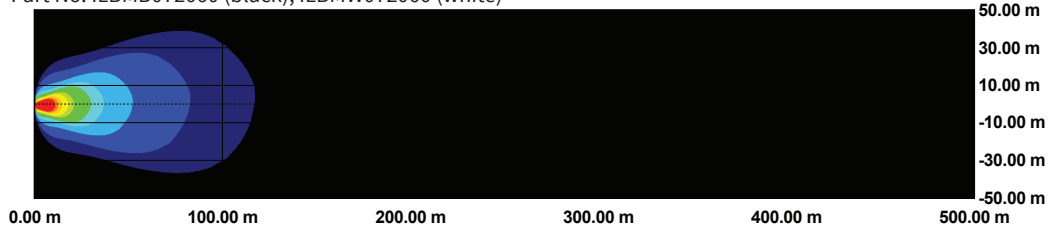
FLOOD BEAM (40°)

Part No. ILBMB072040 (black), ILBMW072040 (white)



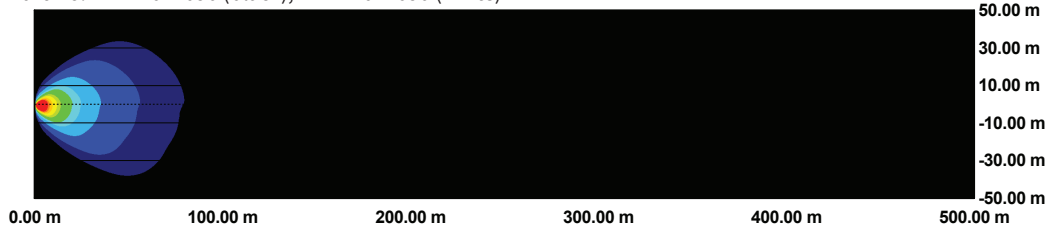
WIDE FLOOD BEAM (60°)

Part No. ILBMB072060 (black), ILBMW072060 (white)



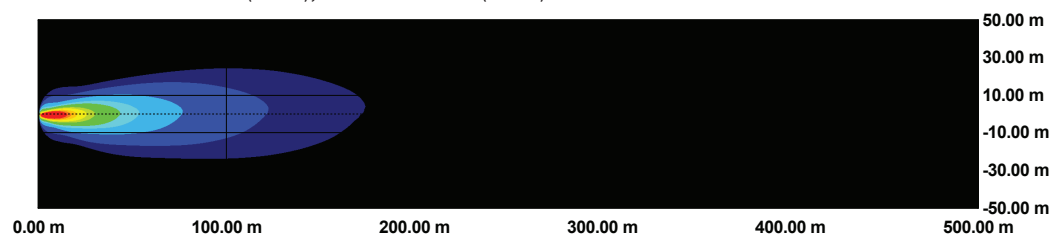
SUPER WIDE FLOOD BEAM (90°)

Part No. ILBMB072090 (black), ILBMW072090 (white)



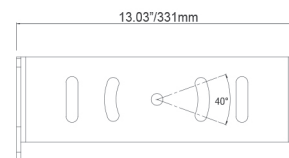
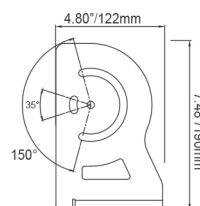
ELLIPTICAL BEAM (30x65°)

Part No. ILBMB07203065 (black), ILBMW07203065 (white)



Pitmaster 30-LED

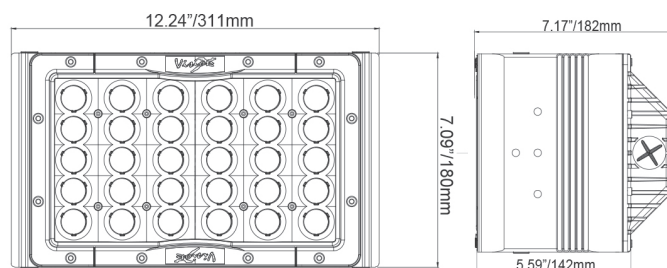
Powered by 



PRODUCT DETAILS

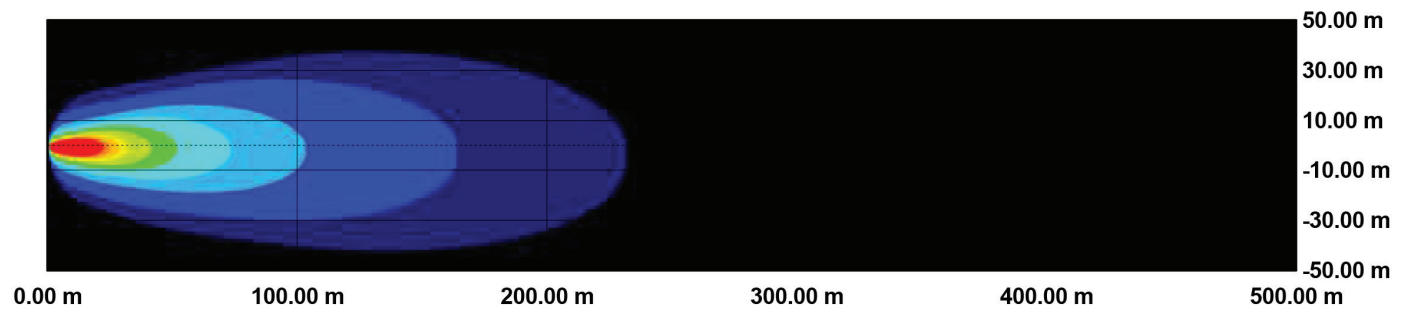
Effective Lumens	17,000 - 21,000*
HPS Equivalent	750W HPS
Current Draw	1.22A @ 115 VAC, 0.61A @ 230VAC
Wattage	140W
Weight	10.9kg / 24 lb
Beam Angle Options	40°, 60°, 90°
Color Temperature	5,000 Kelvin
Input Voltage	90 - 277VAC
IP Rating	IP68
Vibration Dampened & Shock Proof	15.6 Grms
EMC/Emission	EN55015, EN55022, EN61000-X-X
EMC Immunity	EN61000-X, EN61547, EN55024
Lens	Polycarbonate
Environmental Coating	Interpon 810 (Gloss Grey)
Bracket Material	304 Stainless Steel
Warranty	5 Years
Safety Standards Compliance	CE, ROHS, UL1598A, IEC 6247

*Range varies due to the beam angle



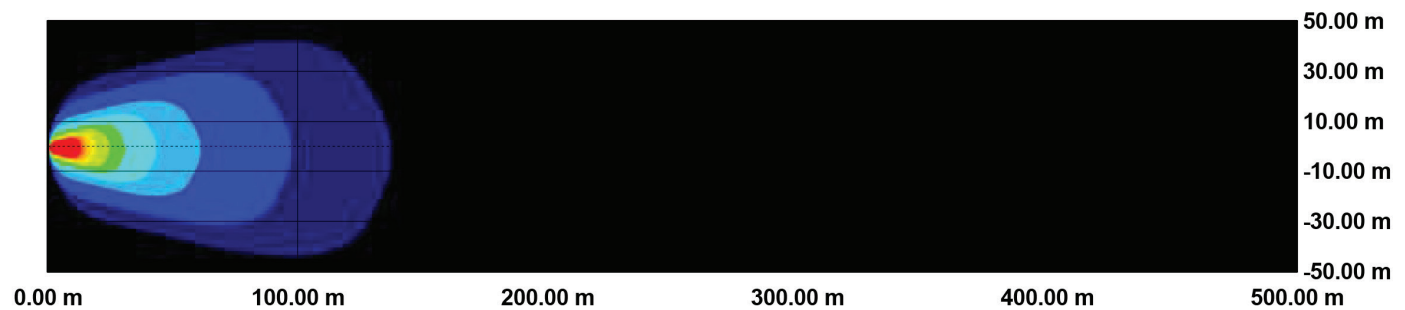
FLOOD BEAM (40°)

Part Number: ILPM30MD-GR-5K



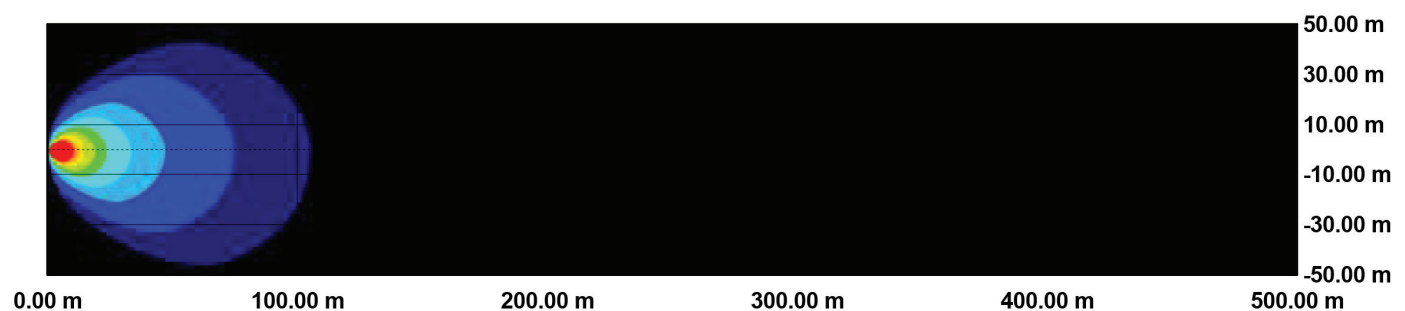
WIDE FLOOD BEAM (60°)

Part Number: ILPM30FD-GR-5K



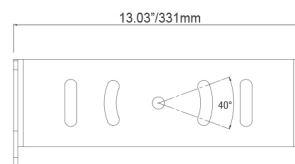
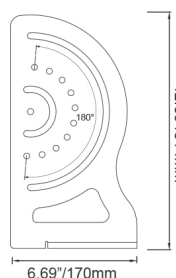
SUPER WIDE FLOOD BEAM (90°)

Part Number: ILPM30WD-GR-5K



Pitmaster 60-LED

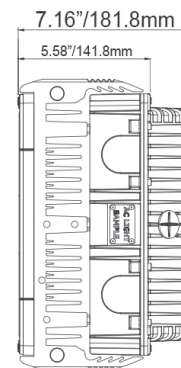
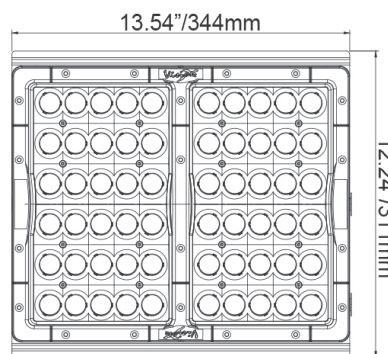
Powered by **Verion**
Global Lighting Systems



PRODUCT DETAILS

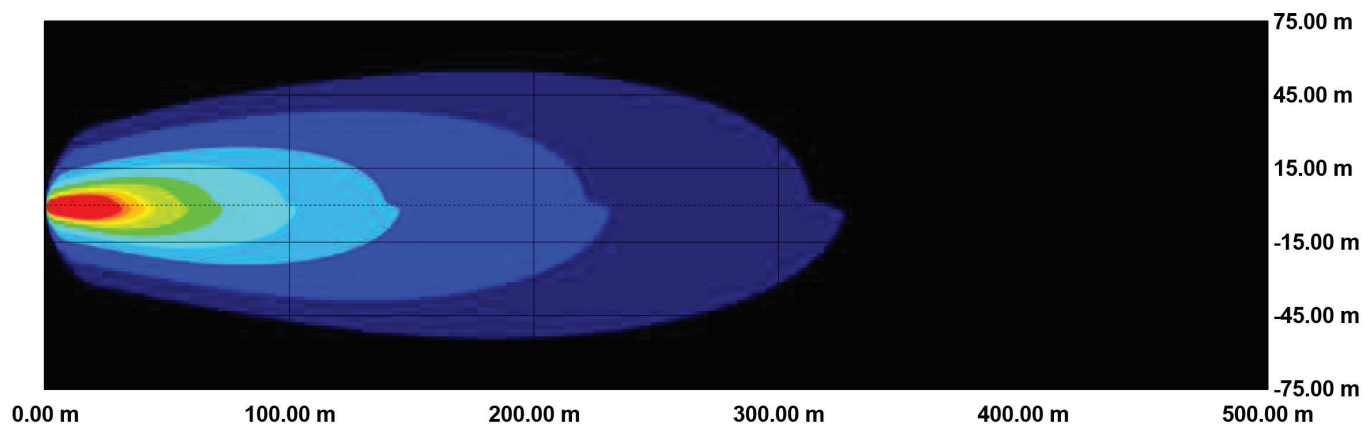
Effective Lumens	34,000 - 42,000*
HPS Equivalent	1,500W HPS
Current Draw	2.43A @ 115 VAC, 1.22A @ 230VAC
Wattage	280W
Weight	20.4kg / 45lb
Beam Angle Options	40°, 60°, 90°
Color Temperature	5,000 Kelvin
Input Voltage	90 - 277VAC
IP Rating	IP68/IP69K
Vibration Dampened & Shock Proof	15.6 Grms
EMC/Emission	EN55015, EN55022, EN61000-X-X
EMC Immunity	EN61000-X, EN61547, EN55024
Lens	Polycarbonate
Environmental Coating	Interpon 810 (Gloss Grey)
Bracket Material	304 Stainless Steel
Warranty	5 Years
Safety Standards Compliance	CE, ROHS, UL1598A, IEC 6247

*Range varies due to the beam angle



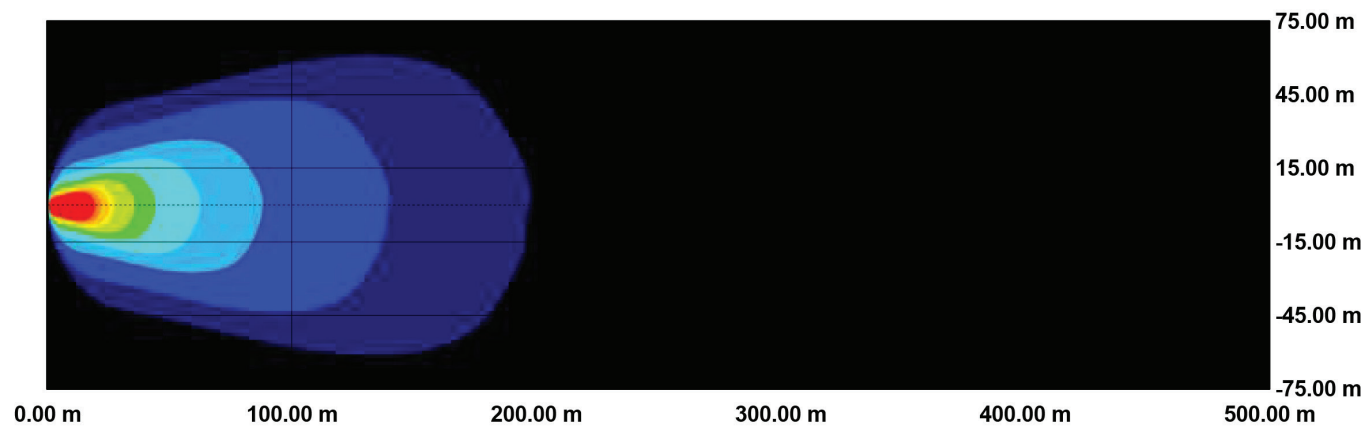
FLOOD BEAM (40°)

Part Number: ILPM60MD-GR-5K



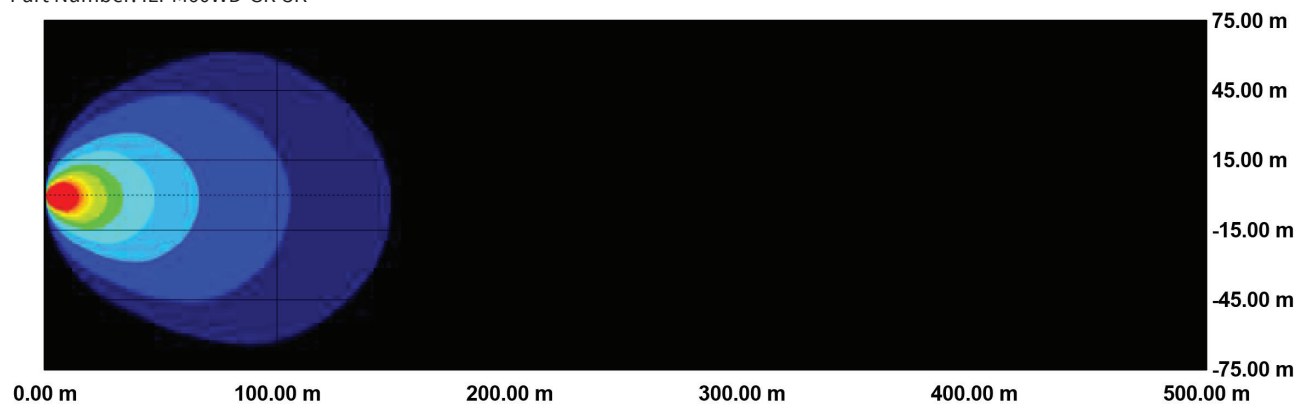
WIDE FLOOD BEAM (60°)

Part Number: ILPM60FD-GR-5K



SUPER WIDE FLOOD BEAM (90°)

Part Number: ILPM60WD-GR-5K

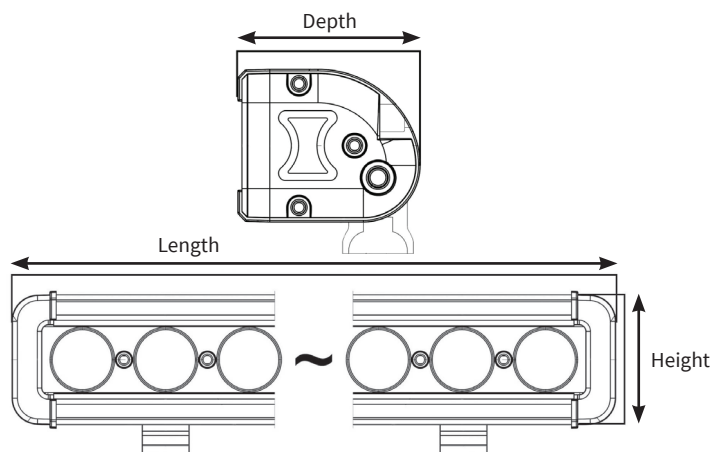




The Trusted Source for Quality Systems

MARINE LIGHTING

Straight LED Bar Lights



PRODUCT DETAILS

	32"	40"	50"
Effective Lumens	9,549 - 9,666	9,839 - 10,044	Currently In Testing
Current Draw @ 12V	11.25	12.50	16.25
Current Draw @ 24V	5.63	6.25	8.13
Wattage	135	150	195
Weight	7.8lbs (3.54kg)	8.8lbs (3.99kg)	11lbs (4.99kg)
Beam Angle Options	25°, 60°, Mixed (25°x60°)		
Color Temperature	5,000 Kelvin		
Input Voltage	10-32VDC		
IP Rating	IP68/IP69K		
Vibration Dampened & Shock Proof	21 Grms		
Lens	Acrylic		
Environmental Coating	Aluminum w/ Electro deposition		
Warranty	3 Years		
Safety Standards Compliance	CE, RoHS, IEC6247, Prop 65, SAE J-3098		

*Range varies due to the beam angle

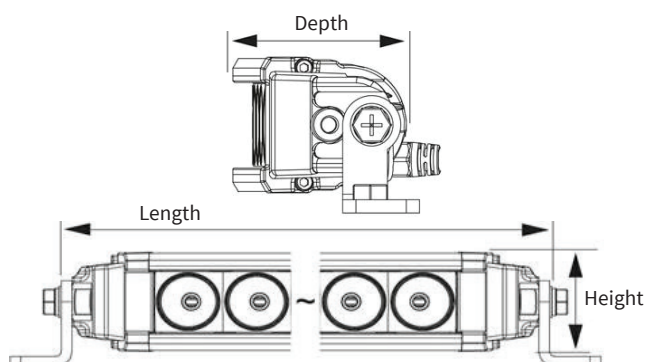




The Trusted Source for Quality Systems

MARINE LIGHTING

Curved LED Bar Lights



PRODUCT DETAILS

	20"	30"	40"	50"	54"
Effective Lumens	5,100	7,956	11,221	13,572	14,616
Current Draw @ 12V	6.25	9.58	12.92	16.25	17.50
Current Draw @ 24V	3.13	4.79	6.46	8.13	8.75
Wattage	75	115	155	195	210
Weight	3.33lbs (1.51kg)	4.23lbs (1.92kg)	5.56lbs (2.52kg)	6.86lbs (3.11kg)	7.43lbs (3.37kg)
Beam Angle Options	10° w/Halo				
Color Temperature	5,000 Kelvin				
Input Voltage	9-32vdc				
IP Rating	IP68/IP69K				
Vibration Dampened & Shock Proof	15 Grms	15 Grms	20 Grms	20 Grms	20 Grms
Lens	Polycarbonate				
Environmental Coating	White or Black				
Warranty	3 Years				
Safety Standards Compliance	CE, RoHS, IEC6247, Prop 65, SAE J-3098				

*Range varies due to the beam angle





Imtra Corporation
30 Samuel Barnet Boulevard
New Bedford, MA 02745
508.995.7000 • www.imtra.com