

PREDATOR 350-S 24 VOLT BILGE PUMP

TYPE APPROVED TO DNV-CP-0505 PUMPING UNITS FOR LIQUIDS

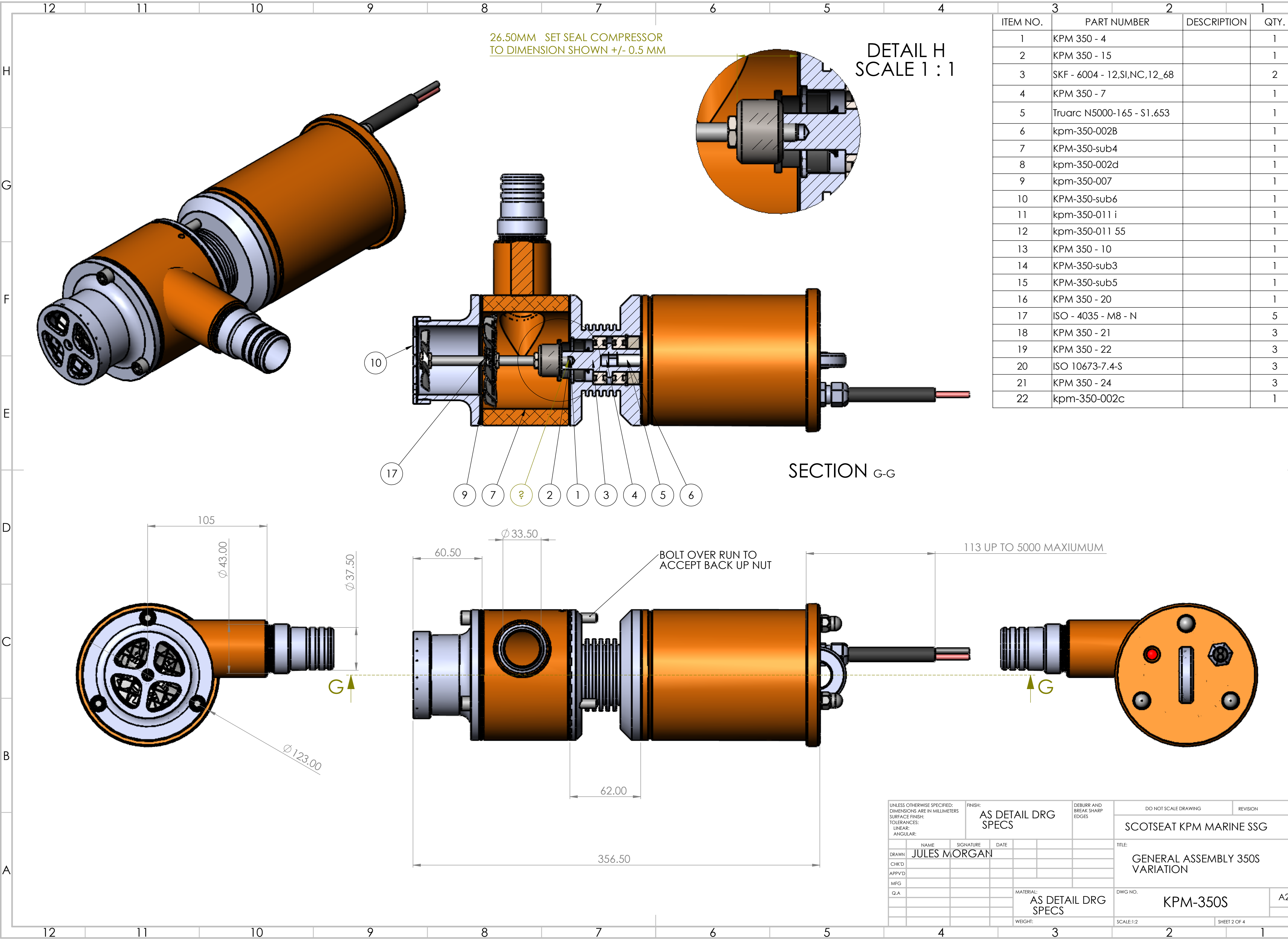
DESIGNED AND TESTED TO MEET

- ISO 8849 SMALL CRAFT ELECRICALLY OPERATED PUMPS
- ISO 8846 SMALL CRAFT ELECTRICAL DEVICES PROTECTION FROM FLAMMABLE GAS
- HSC 2000 PART 4 SECTION 3 BILGE AND BALLAST SYSTEMS.
- USCG PRG 46-CFR-182.520
- UL1113 ELECTRICALLY OPERATED PUMPS FOR NON FLAMMABLE LIQUIDS , MARINE

- Standards conformity

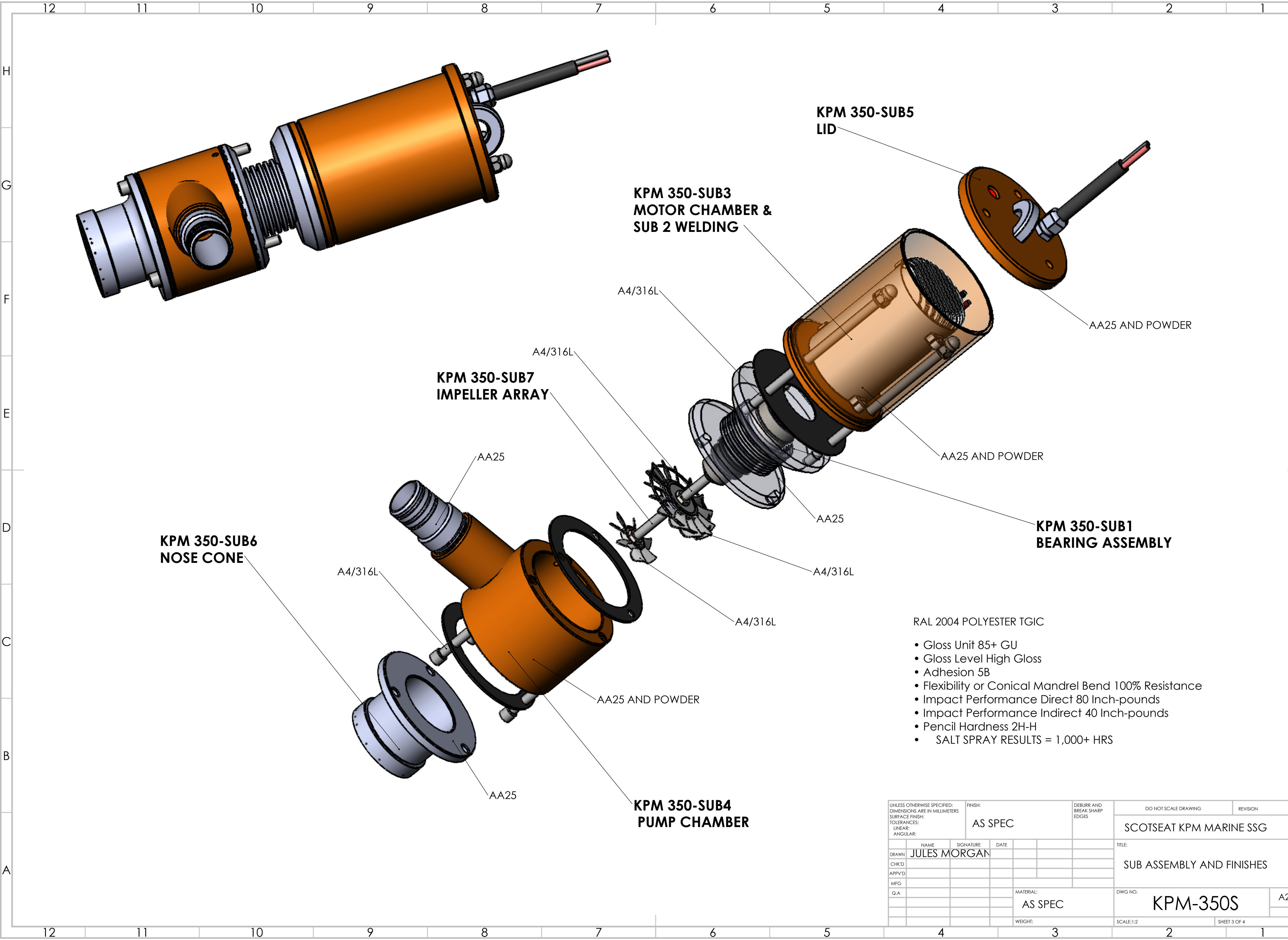
- EN6100-6:2001
- EN61000-6-3:2007
- 2004/108/EC electro magnetic
- ISO8846 Electrical protection ignition of surrounding gasses
- ISO 8849:2003 electrically operated bilge pumps
- ISO 10133/electrical systems low voltage DC -94/25/EEC

UNLESS OTHERWISE SPECIFIED: DIMENSIONS ARE IN MILLIMETERS SURFACE FINISH: TOLERANCES: LINEAR: ANGULAR:						FINISH: AS SPEC		DEBURR AND BREAK SHARP EDGES		DO NOT SCALE DRAWING			REVISION	
										SCOTSEAT KPM MARINE SSG				
DRAWN	NAME		SIGNATURE		DATE						TITLE:			
	JULES MORGAN										KPM 350-S PREDATOR			
CHK'D											DWG NO.			
APPV'D														
MFG											KPM-350S		A2	
Q.A														
							MATERIAL:							
							AS SPEC							
							WEIGHT:				SCALE:1:2		SHEET 1 OF 4	



ITEM NO.	PART NUMBER	DESCRIPTION	QTY.
1	KPM 350 - 4		1
2	KPM 350 - 15		1
3	SKF - 6004 - 12,SI,NC,12_68		2
4	KPM 350 - 7		1
5	Truarc N5000-165 - S1.653		1
6	kpm-350-002B		1
7	KPM-350-sub4		1
8	kpm-350-002d		1
9	kpm-350-007		1
10	KPM-350-sub6		1
11	kpm-350-011 i		1
12	kpm-350-011 55		1
13	KPM 350 - 10		1
14	KPM-350-sub3		1
15	KPM-350-sub5		1
16	KPM 350 - 20		1
17	ISO - 4035 - M8 - N		5
18	KPM 350 - 21		3
19	KPM 350 - 22		3
20	ISO 10673-7.4-S		3
21	KPM 350 - 24		3
22	kpm-350-002c		1

UNLESS OTHERWISE SPECIFIED: DIMENSIONS ARE IN MILLIMETERS SURFACE FINISH: TOLERANCES: LINEAR: ANGULAR:				FINISH: AS DETAIL DRG SPECS		DEBURR AND BREAK SHARP EDGES		DO NOT SCALE DRAWING		REVISION
DRAWN JULES MORGAN				NAME	SIGNATURE	DATE		TITLE: GENERAL ASSEMBLY 350S VARIATION		
CHK'D								DWG NO. KPM-350S		
APPVD								SCALE:1:2		
MFG								SHEET 2 OF 4		
Q.A								A2		
				MATERIAL: AS DETAIL DRG SPECS		WEIGHT:				



- RAL 2004 POLYESTER TGIC
- Gloss Unit 85+ GU
 - Gloss Level High Gloss
 - Adhesion 5B
 - Flexibility or Conical Mandrel Bend 100% Resistance
 - Impact Performance Direct 80 Inch-pounds
 - Impact Performance Indirect 40 Inch-pounds
 - Pencil Hardness 2H-H
 - SALT SPRAY RESULTS = 1,000+ HRS

UNLESS OTHERWISE SPECIFIED: DIMENSIONS ARE IN MILLIMETERS SURFACE FINISH: TOLERANCES: LINEAR: ANGULAR:				FINISH: AS SPEC		DEBURR AND BREAK SHARP EDGES		DO NOT SCALE DRAWING		REVISION			
								SCOTSEAT KPM MARINE SSG					
NAME		SIGNATURE		DATE				TITLE:					
DRAWN		JULES MORGAN						SUB ASSEMBLY AND FINISHES					
CHK'D													
APPV'D													
MFG													
Q.A						MATERIAL:		DWG NO.		A2			
						AS SPEC		KPM-350S					
						WEIGHT:		SCALE:1:2		SHEET 3 OF 4			
4				3				2				1	

